

DID YOU KNOW?

about our...



**NEW
PRODUCT**

Suspension Anchor

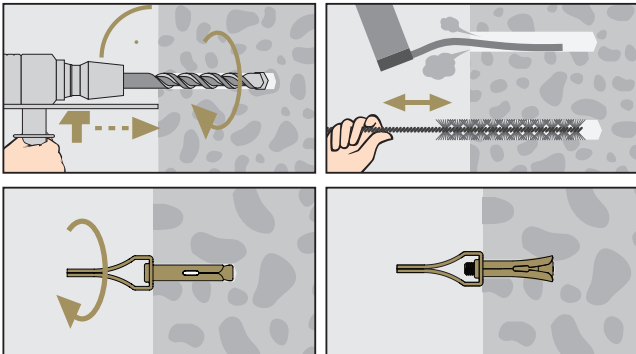
A pre-assembled tie wire sleeve anchor for the purpose of suspending ceilings, attaching cable ties and other suspension applications.

SUSPENSION ANCHOR ZINC YELLOW PASSIVATE / HEC

Part	QFind	Size	Length	Drill Size	Pack Qty	Pack Weight
		(mm)	(mm)	Ø (mm)		(kg)
MSAMSYM060025	MSA100	M6	25	6.5	100	1.5
MSAMSYM060035	MSA101	M6	35	6.5	100	1.6



Installation



FEATURES

- Threaded suspension body
- 8mm eyelet
- No installation tool required – turn the suspension body of the anchor to expand the sleeve.

CONX[®]TRUCT

Disclaimer: While every reasonable effort has been made to ensure that this document is correct at the time of printing, Hobson Engineering®, its agencies and employees, disclaim any and all liability to any person in respect of anything or the consequences of anything done or omitted to be done in reliance upon the whole or any part of this document.

Bolt Tension | Anti-Vibration | Product Reliability | Traceability

hobson.com.au **QUALITY FASTENERS SINCE 1935**

