

DID YOU KNOW?

about our... **SECURITY DSE10 SLEEVE ANCHOR**



DSE10 SLEEVE ANCHOR MUSHROOM HEAD ZINC PLATED / TECFI® / CLASS 8.8 / T40

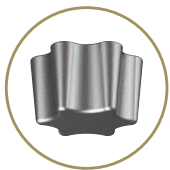
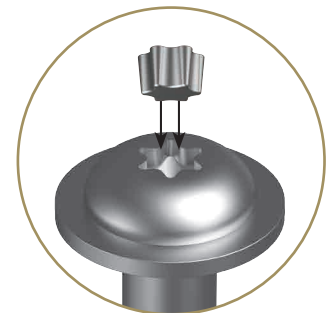


Part	Qfind	Size (mm)	Length (mm)	Drill Ø Size (mm)	Max Thk of Fixture (mm)	Torx Drive	Pack Qty
MTFHDSE1010080	DSE1010080	10	80	10	10	T40	50
MTFHDSE1010100	DSE1010100	10	100	10	30	T40	50
MTFHDSE1010120	DSE1010120	10	120	10	50	T40	50
MTFHDSE1012080	DSE1012080	12	80	12	10	T40	50
MTFHDSE1012100	DSE1012100	12	100	12	30	T40	25
MTFHDSE1012120	DSE1012120	12	120	12	50	T40	25

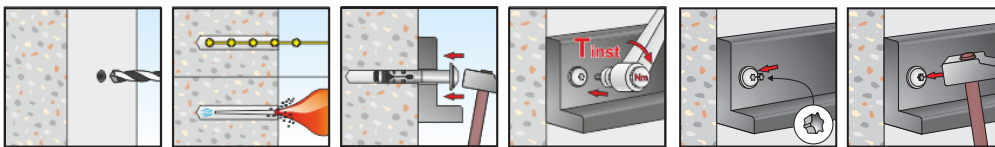
**NEW
PRODUCT**



FOR ADDED SECURITY



Anti-tamper plugs are included in each pack



Features:

- » Sleeve anchor with mushroom head class 8.8 zinc plated
- » ETA-CE certified Option 7 allows the use of the anchor in non-cracked concrete
- » Through fixing
- » Large OD Washer
- » Anti-Tamper Plug - Installed after installation

Bolt Tension | Anti-Vibration | Product Reliability | Traceability

hobson.com.au **QUALITY FASTENERS SINCE 1935**



1901311DYK