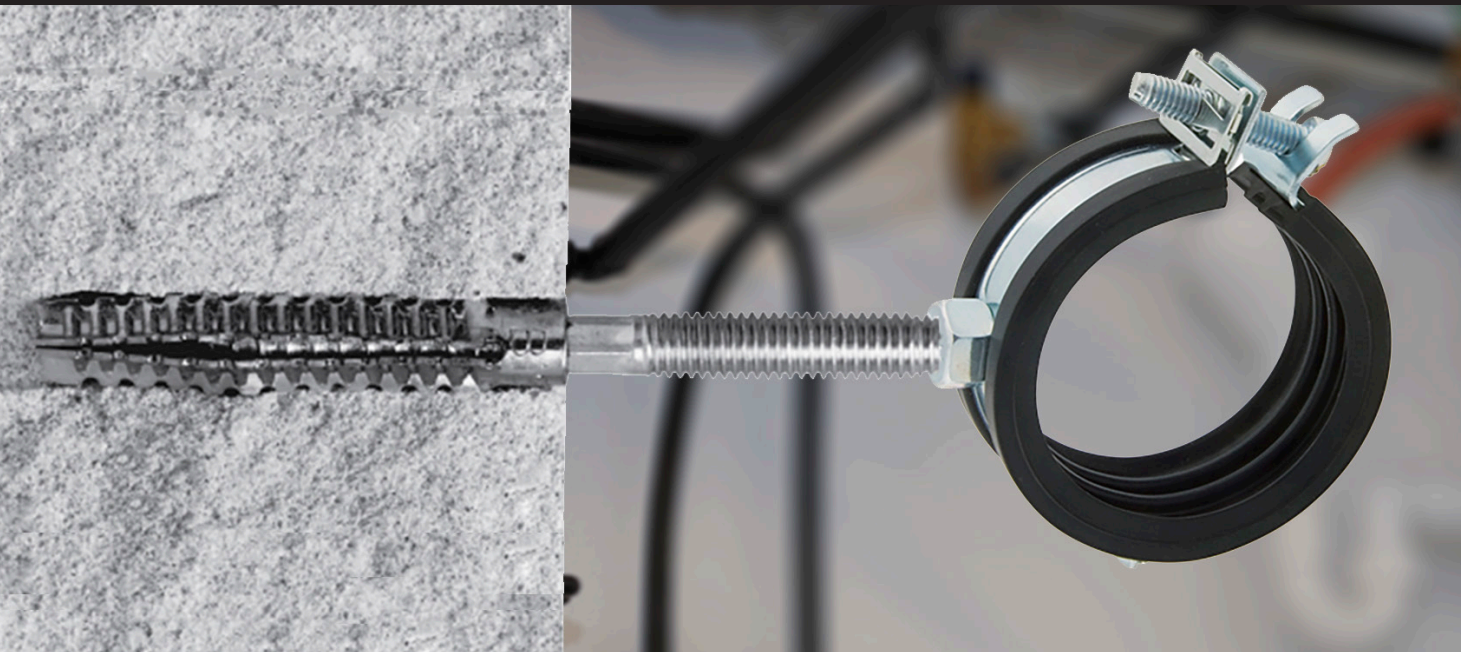


**Mungo MEF Easy-Fix**

**HOBSON Part prefix: MUSMEF**

**Designed for fixing into (AAC) Autoclaved Aerated Concrete**
**Features**

- No pre-drilling in aerated concrete
- For use with wood, self-tapping and hexagon screws
- Pre installation
- Indoor applications
- Zinc Plated

**Applications**

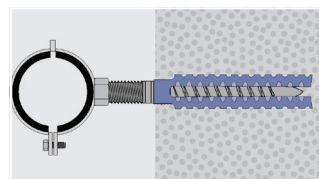
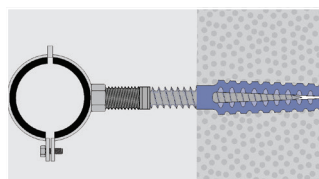
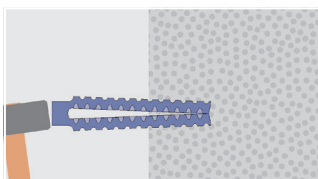
- Fixing Clotheslines
- Taps
- Downpipes
- Hot water services
- Light fixtures
- Electrical Conduit
- Outdoor Powerpoints
- Letterboxes
- Café Blinds
- Awnings
- Pipes
- Water Conduits
- Gas Conduits

**Technical Data**

Code	Article Code	Plug Ø mm $d_{nom}$	Length mm L	Screw $d_s$	Drilling Hole Ø mm $d_0$	Box Content	Aerated Concrete Tension Load (kg)
MUSMEF001127074	1127074	6	32	5-6	7-9	100	22
MUSMEF001127075	1127075	8	38	6-8	10-12	100	40
MUSMEF001127076	1127076	8	60	6-8	10-12	100	47
MUSMEF001127077	1127077	10	60	8-10	12-14	100	52

 Safety factor of 3 is included / 10 N  $\approx$  1 kg.

Pre-drilling may be required into dense or aged materials. The harder the material, the larger the drill Ø required.

**Installation**

**ONLINE** **FREE** Design software download: [hobson.com.au/mungo-software](http://hobson.com.au/mungo-software)