

# DID YOU KNOW?

about our... **NYLOC® SQUARE U BOLT KIT**



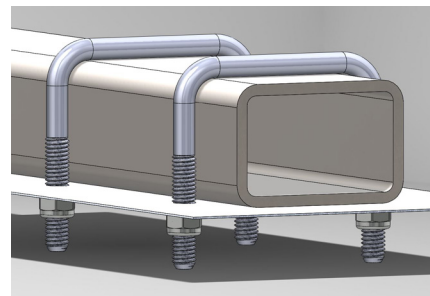
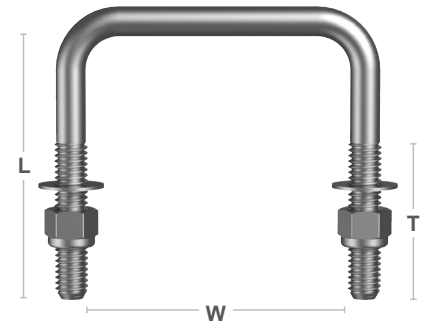
**NEW  
PRODUCT**

**NYLOC®**

## U BOLT SQUARE KIT NYLOC / WASH HOT DIP GALVANISED / HEC / MILD STEEL / GR2

| Part             | Dia Ø<br>BSW<br>(Inch) | Width<br>W (mm) | Length<br>L (mm) | Thread<br>T (mm) | Pack<br>(Qty) |
|------------------|------------------------|-----------------|------------------|------------------|---------------|
| KUSMSGN050040100 | 1/2"                   | 40              | 100              | 60               | 25            |
| KUSMSGN050040112 | 1/2"                   | 40              | 112              | 60               | 25            |
| KUSMSGN050040125 | 1/2"                   | 40              | 125              | 60               | 25            |
| KUSMSGN050040137 | 1/2"                   | 40              | 137              | 60               | 25            |
| KUSMSGN050040150 | 1/2"                   | 40              | 150              | 60               | 25            |
| KUSMSGN050045100 | 1/2"                   | 45              | 100              | 60               | 25            |
| KUSMSGN050045112 | 1/2"                   | 45              | 112              | 60               | 25            |
| KUSMSGN050045125 | 1/2"                   | 45              | 125              | 60               | 25            |
| KUSMSGN050045137 | 1/2"                   | 45              | 137              | 60               | 25            |
| KUSMSGN050045150 | 1/2"                   | 45              | 150              | 60               | 25            |
| KUSMSGN050045162 | 1/2"                   | 45              | 162              | 60               | 25            |
| KUSMSGN050045175 | 1/2"                   | 45              | 175              | 60               | 25            |
| KUSMSGN050050075 | 1/2"                   | 50              | 75               | 50               | 25            |
| KUSMSGN050050100 | 1/2"                   | 50              | 100              | 60               | 25            |
| KUSMSGN050050112 | 1/2"                   | 50              | 112              | 60               | 25            |
| KUSMSGN050050125 | 1/2"                   | 50              | 125              | 60               | 25            |
| KUSMSGN050050137 | 1/2"                   | 50              | 137              | 60               | 25            |
| KUSMSGN050050150 | 1/2"                   | 50              | 150              | 60               | 25            |
| KUSMSGN050050162 | 1/2"                   | 50              | 162              | 60               | 25            |
| KUSMSGN050050175 | 1/2"                   | 50              | 175              | 60               | 25            |
| KUSMSGN050050200 | 1/2"                   | 50              | 200              | 60               | 25            |
| KUSMSGN050050250 | 1/2"                   | 50              | 250              | 60               | 20            |
| KUSMSGN050056112 | 1/2"                   | 56              | 112              | 60               | 25            |
| KUSMSGN050056125 | 1/2"                   | 56              | 125              | 60               | 25            |
| KUSMSGN050056137 | 1/2"                   | 56              | 137              | 60               | 25            |
| KUSMSGN050056162 | 1/2"                   | 56              | 162              | 60               | 25            |
| KUSMSGN050075075 | 1/2"                   | 75              | 75               | 50               | 25            |
| KUSMSGN050075100 | 1/2"                   | 75              | 100              | 60               | 25            |
| KUSMSGN050075125 | 1/2"                   | 75              | 125              | 60               | 25            |
| KUSMSGN050075150 | 1/2"                   | 75              | 150              | 60               | 25            |
| KUSMSGN050100075 | 1/2"                   | 100             | 75               | 50               | 25            |
| KUSMSGN050100100 | 1/2"                   | 100             | 100              | 60               | 20            |
| KUSMSGN050100125 | 1/2"                   | 100             | 125              | 60               | 10            |

1904-151DYK

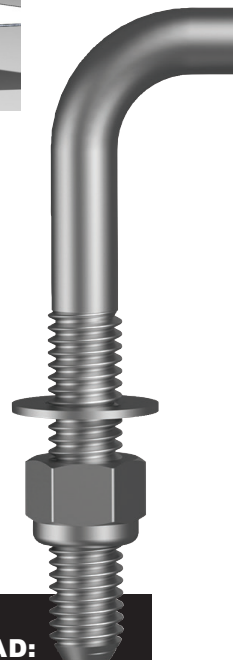


### Application:

- Secure square items such as RHS or timber
- Box and boat trailers
- Galvanised for extended outdoor use

### Kit Includes:

- Washer
- Nyloc® Nut



**DOWNLOAD:**  
This product has a  
Test Certificate and/or  
Report available

**ONLINE**