

# DID YOU KNOW?

about our...



**NEW  
PRODUCT**

## Linch Pin - Zinc Yellow Passivate

A fastener for quick connecting and disconnecting of parts to an axle or pin.

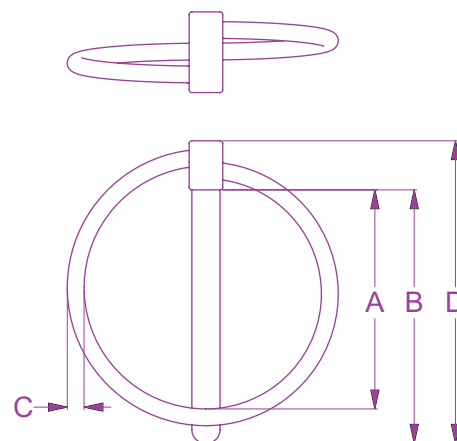
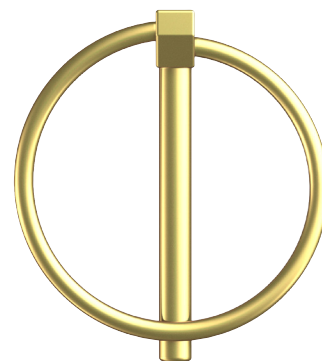
### LINCH PIN ZINC YELLOW PASSIVATE / HEC / MILD STEEL

Part	Size				Pack Qty
	A (mm)	B (mm)	C (mm)	D (mm)	
QPLMSYM045036	32.0 - 35.0	36	2.5	44.0 - 45.0	25
QPLMSYM060045	39.0 - 41.0	45	3.0	53.0 - 55.0	25
QPLMSYM080045	41.0 - 42.0	45	3.0	55.0 - 57.0	25
QPLMSYM110045	42.0 - 43.0	45	3.5	56.0 - 58.0	25
QPLMSYM110070	66.0 - 67.0	70	3.5	78.0 - 80.0	25

Note: Dimensions are a guide only

### APPLICATIONS

Linch pins are specifically designed to retain a wheel or other rotating device on it's axle. Often used to attach tractor implements, secure trailer couplers, camper trailers, tray backs, towing, mining, haulage equipment, where quick connecting/disconnecting between mating parts is required.



Disclaimer: While every reasonable effort has been made to ensure that this document is correct at the time of printing, Hobson Engineering®, its agencies and employees, disclaim any and all liability to any person in respect of anything or the consequences of anything done or omitted to be done in reliance upon the whole or any part of this document.

Bolt Tension | Anti-Vibration | Product Reliability | Traceability

**hobson.com.au** **QUALITY FASTENERS SINCE 1935**



2012101DYK