

DID YOU KNOW?

about our... **SS316 Extra Large Flat Round Washer**



**NEW
PRODUCT**

EXTRA LARGE FLAT ROUND WASHER 316 STAINLESS / HEC / A4

Part	Bolt Size	OD (mm)	ID (mm)	Thk (mm)	Pack Qty
WX16PLM12	M12	44.5	13.2	5.75	100
WX16PLM16	M16	57.2	17.7	5.75	50

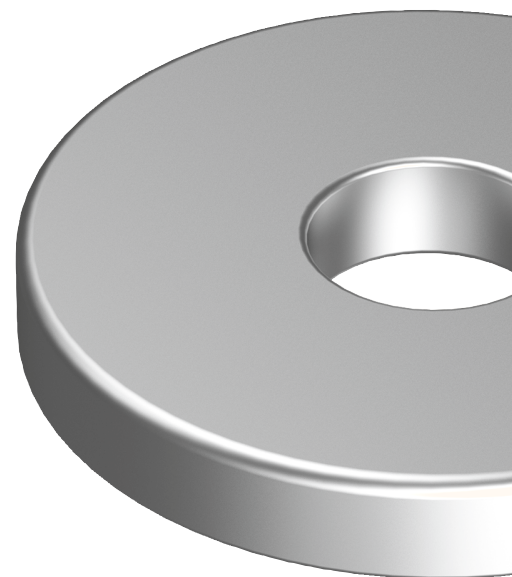


Application Advice

Most fabrication standards prescribe the hole size to not exceed 2mm (for up to M24) and not to exceed 3mm (for greater than M24) larger than the nominal bolt size. The process of making the holes may leave a chamfered edge. The outside measurement of this hole is the actual diameter of the hole. The bolt assemblies; i.e. bolt, nut and washer are designed for this condition. However, in some situations, it is necessary to use either elongated holes or over sized holes due to fabrication requirements. When this is the case, the engineer and the fabricator should use washers between the bolt and nut and the joint surface. This avoids excessive stresses and deformation of both the washer and material in the connection.

Features

- » **EXTRA LARGE** so the load is distributed across a greater surface area
- » Protects the surface material from damage
- » Helps to prevent the nut from loosening
- » Can be used on slotted and oversized holes
- » Effective spacer for gaps or to take up additional bolt length



2004081DYK