

DID YOU KNOW?

about our...



**NEW
PRODUCT**

Tygabolt® Eye Sleeve Anchor

The Tygabolt® Eye is a pre-assembled single unit wedge-type anchor used in solid concrete applications. Fixing is achieved by controlled torquing of the eye which draws the cone section up in the sleeve, thereby expanding it outward and forcing the Tygabolt® against the sidewall of the pre-drilled hole.

TYGABOLT® EYE SLEEVE ANCHOR ZINC YELLOW PASSIVATE / HEC / CLASS 4.6

Part	QFind	Eye Diam	Length	Pack Qty
		D _w (mm)	L (mm)	
MTEMSYM080045	MTE100	10.0	45	100

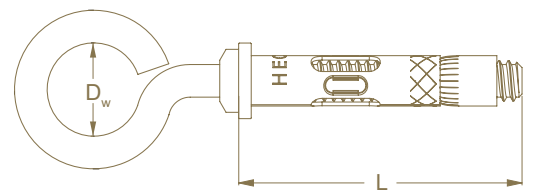
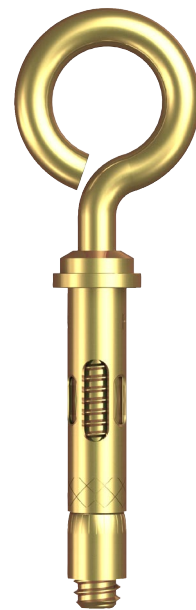
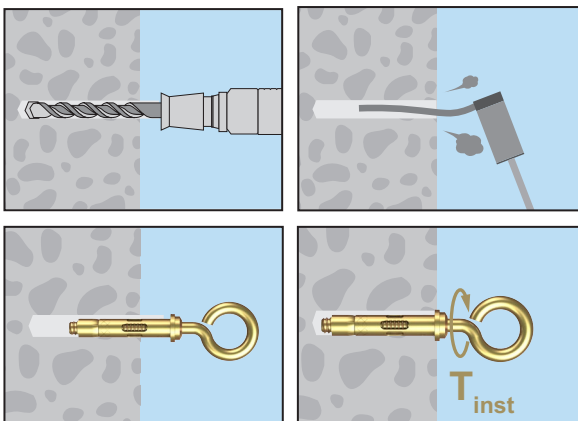
APPLICATIONS

- Tie-down points
- Ceiling and partitioning
- Cables and tie wires

FEATURES

- Suitable for light duty loads
- Quick and easy to install
- 10mm eyelet

INSTALLATION



TYgaBolt®
CONXTRUCT®

Disclaimer: While every reasonable effort has been made to ensure that this document is correct at the time of printing, Hobson Engineering®, its agencies and employees, disclaim any and all liability to any person in respect of anything or the consequences of anything done or omitted to be done in reliance upon the whole or any part of this document.

Bolt Tension | Anti-Vibration | Product Reliability | Traceability

hobson.com.au **QUALITY FASTENERS SINCE 1935**

