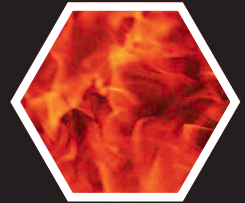


# DID YOU KNOW?

about our...



**NEW  
PRODUCT**

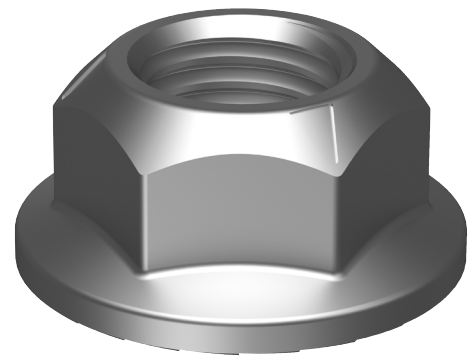
## Hex Flange Cone Lock Nut

**HEX FLANGE CONE LOCK NUT  
ZINC PLATED (ROHS COMPLIANT) / DIN6927 / CLASS 10**

Part	Size	AF (mm)	Thread (mm)	Pack Qty
NF10Z7SCM20	M20	30	2.50	50

### FEATURES

- Cone lock adds prevailing torque to connection to protect against loosening.
- Flange body removes the need for a washer.
- Serrations add friction to the connection to further protect against loosening.



You can download this  
Test Certificate and/or  
Report from our website:

**[hobson.com.au](http://hobson.com.au)**

Disclaimer: While every reasonable effort has been made to ensure that this document is correct at the time of printing, Hobson Engineering®, its agencies and employees, disclaim any and all liability to any person in respect of anything or the consequences of anything done or omitted to be done in reliance upon the whole or any part of this document.

Bolt Tension | Anti-Vibration | Product Reliability | Traceability

**[hobson.com.au](http://hobson.com.au) QUALITY FASTENERS SINCE 1935**

