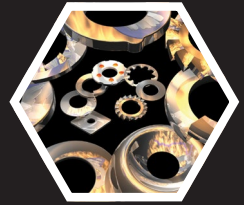


DID YOU KNOW?

about our...



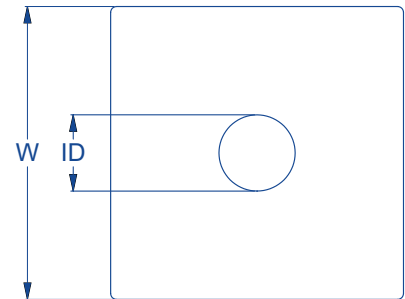
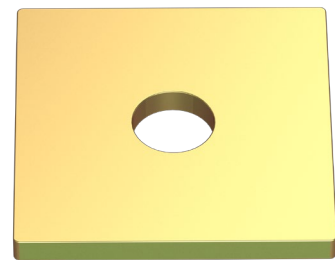
**NEW
PRODUCT**

XBolt® Square Washer Zinc Yellow Passivate

Square washers evenly distribute the load in a steel connection exerted by the bolt or nut.

XBOLT® SQUARE WASHER ZINC YELLOW PASSIVATE / HEC / MILD STEEL

Part	Diameter	Width	Inner Diameter	Thickness	Pack Qty
		W (mm)	ID (mm)	T (mm)	
WSMSYX10050030	M10	50	13	3	200
WSMSYX12050030	M12	50	15	3	200



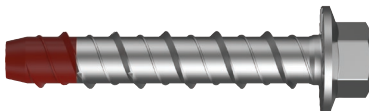
STANDARD WASHERS

A standard washer is a thin plate typically round or square with a hole that is normally in the centre. They are used for two main reasons:

1. To minimise scouring or scratch damage to mating material as a result of nut rotation.
2. To increase the effective bearing surface of the bolt and/or nut. That is, to distribute the load of a threaded fastener over a larger area and prevent deformation of the bearing surfaces.

SUITED TO XBOLT® BOLTS

Washers are specifically suited for XBolt® Screw Bolts because they have an oversized hole to fit over the larger XBolt® threads.



APPLICATIONS

Main use is for securing timber frame bottom plates to concrete slabs.

XBolt

Disclaimer: While every reasonable effort has been made to ensure that this document is correct at the time of printing, Hobson Engineering®, its agencies and employees, disclaim any and all liability to any person in respect of anything or the consequences of anything done or omitted to be done in reliance upon the whole or any part of this document.

Bolt Tension | Anti-Vibration | Product Reliability | Traceability

hobson.com.au **QUALITY FASTENERS** SINCE 1935

