

DID YOU KNOW?

about our...



**NEW
PRODUCT**

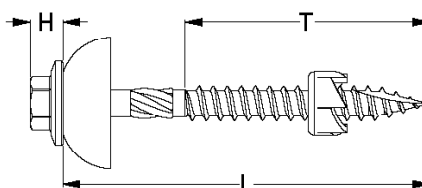
Type 17 SDS Hex Head Polycarb ALL-IN-1 Roofing Screw

**TYPE 17 SDS HEX HEAD POLYCARB ALL-IN-1 ROOFING SCREW
CLASS 4 / AS3566 / C1022 HARDENED**

Part	QFind	Gauge	TPI	Length	Thread Length	Head Height	Head ø	Drive Size
				L (mm)	T (mm)	H (mm)	D (mm)	AF (inch)
T9PW4PA1211050	Q871	12	11	50	35	5.7	14.3	HEX 5/16"
T9PW4PA1211065	Q873	12	11	65	45	5.7	14.3	HEX 5/16"

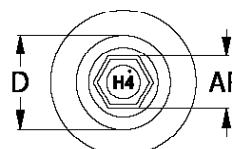
APPLICATIONS

- Polycarbonate sheet to timber fixing
- Crest fixing polycarbonate roof sheets
- Pergolas and sheds

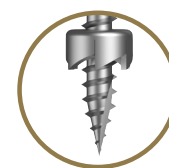


INSTALLATION GUIDE

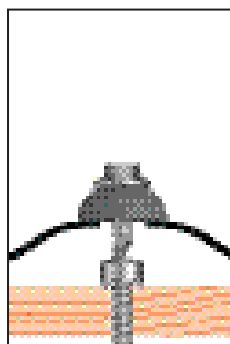
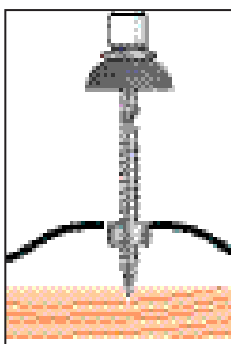
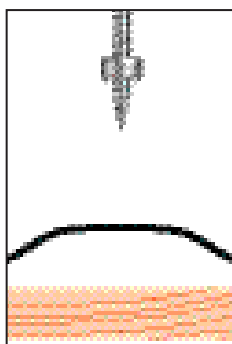
1. Use a cordless screw driver set to 1,500 RPM.
Fit the HEX Drive Bit over the screw driver while drilling.
2. Consistently apply firm pressure to the screw driver while drilling.
3. Allow the cutter to cut an expansion hole in the polycarbonate sheet.
4. Tighten until dome washer is in firm contact with the sheet without the latter compressing or deforming.



Large domed sealing washer to support and seal polycarbonate roofing



Expansion hole cutter creates a thermal expansion hole in the roofing sheet



DRILLX®

Disclaimer: while every reasonable effort has been made to ensure that this document is correct at the time of printing, Hobson Engineering®, its agencies and employees disclaim all liability in respect to anything or the consequences of anything done or omitted regarding the whole or any part of this document.

Bolt Tension | Anti-Vibration | Product Reliability | Traceability

hobson.com.au **QUALITY FASTENERS SINCE 1935**



230413DYK