

DID YOU KNOW?

about our...

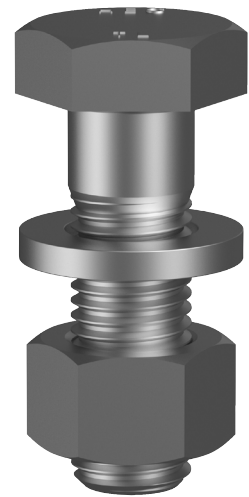


**NEW
PRODUCT**

Tower Bolt Single Nut & Washer

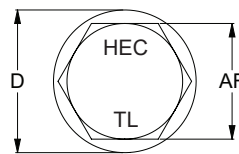
TOWER BOLT SINGLE NUT & WASHER HOT DIP GALVANISED / AS 1559 / CARBON STEEL LOW TEMP

Part	Size	D	AF	L	H	W	N	T
		(mm) nom	(mm)	(mm)	(mm) nom	(mm) nom	(mm) nom	(mm)
KBHMSTLGSM160035	M16	30	24	35	10	5	14.5	25
KBHMSTLGSM160040	M16	30	24	40	10	5	14.5	25
KBHMSTLGSM160045	M16	30	24	45	10	5	14.5	25
KBHMSTLGSM160050	M16	30	24	50	10	5	14.5	25
KBHMSTLGSM160055	M16	30	24	55	10	5	14.5	25
KBHMSTLGSM200045	M20	36	30	45	12	5	17.5	28
KBHMSTLGSM200050	M20	36	30	50	12	5	17.5	28
KBHMSTLGSM200055	M20	36	30	55	12	5	17.5	28
KBHMSTLGSM200060	M20	36	30	60	12	5	17.5	28
KBHMSTLGSM200065	M20	36	30	65	12	5	17.5	28



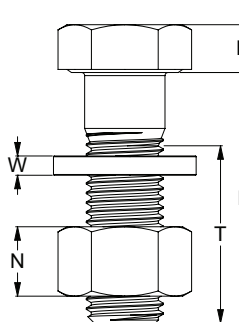
FEATURES

- Bolts are marked with 'HEC', 'TL', 'M' and nominal bolt length
- Suitable for low temperature applications



APPLICATIONS

- Transmission towers and electrical distribution



You can download this Test Certificate and/or Report from our website:

hobson.com.au

Disclaimer: while every reasonable effort has been made to ensure that this document is correct at the time of printing, Hobson Engineering®, its agencies and employees disclaim all liability in respect to anything or the consequences of anything done or omitted regarding the whole or any part of this document.

Bolt Tension | Anti-Vibration | Product Reliability | Traceability

hobson.com.au **QUALITY FASTENERS SINCE 1935**

