

DID YOU KNOW?

about our...

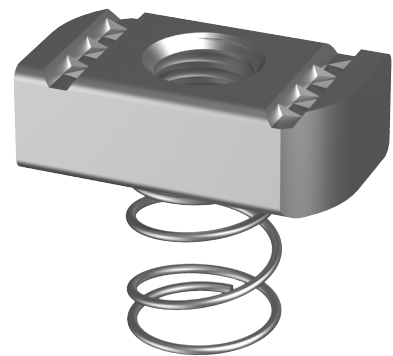


**NEW
PRODUCT**

Strut Channel Nut Short Spring

STRUT CHANNEL NUT SHORT SPRING HOT DIP GALVANISED / HEC

| Part | Diameter | A | B | C | L | d2 |
|-------------|----------|------|------|------|------|------|
| | | (mm) | (mm) | (mm) | (mm) | (mm) |
| NSMSGSSCM06 | M6 | 19 | 34.5 | 6.0 | 19 | 18 |
| NSMSGSSCM08 | M8 | 19 | 34.5 | 8.0 | 19 | 18 |
| NSMSGSSCM10 | M10 | 19 | 34.5 | 9.2 | 19 | 18 |
| NSMSGSSCM12 | M11 | 19 | 34.5 | 12.0 | 19 | 18 |
| NSMSGSSCM16 | M12 | 29 | 34.5 | 11.0 | 19 | 18 |

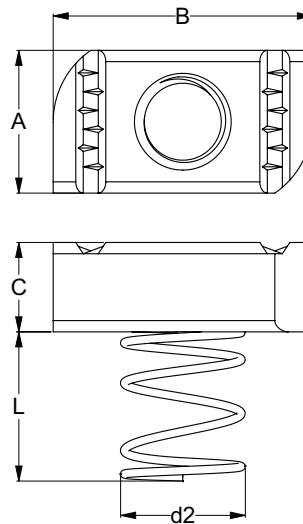


FEATURES

- Easy install and precise placement
- Spring holds the nut securely in place, acting as a 'third hand'
- Freedom to adjust positioning
- Serrated grooves on the top face prevent unwanted movement or rotation

APPLICATIONS

- Securing cable trays and ladders onto channel (strut)
- Using an angle fitting to make a right-angle connection between two lengths of channel
- Fixing of channel supports to strut
- Shallow channel sections (41x21mm channel)



Disclaimer: while every reasonable effort has been made to ensure that this document is correct at the time of printing, Hobson Engineering®, its agencies and employees disclaim all liability in respect to anything or the consequences of anything done or omitted regarding the whole or any part of this document.

Bolt Tension | Anti-Vibration | Product Reliability | Traceability

hobson.com.au **QUALITY FASTENERS SINCE 1935**

