

DID YOU KNOW?

about our...



**NEW
PRODUCT**

Strut Channel Nut No Spring

STRUT CHANNEL NUT NO SPRING ZINC PLATED (ROHS COMPLIANT) / HEC

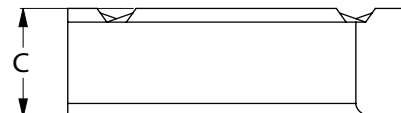
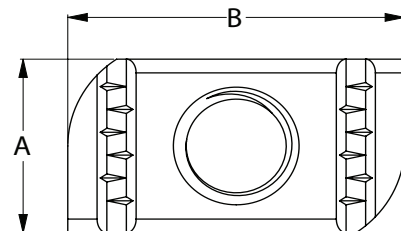
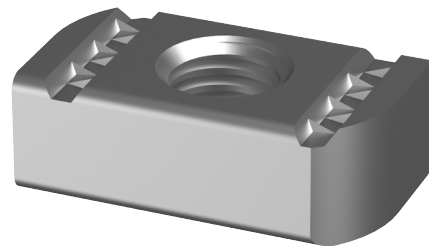
Part	Diameter	A	B	C
		(mm)	(mm)	(mm)
NSMSZNSCM06	M6	19	34.5	6.0
NSMSZNSCM08	M8	19	34.5	8.0
NSMSZNSCM10	M10	19	34.5	9.2
NSMSZNSCM12	M12	19	34.5	12.0
NSMSZNSCM16	M16	29	34.5	11.0

FEATURES

- Easy install and precise placement
- Freedom to adjust positioning
- Serrated grooves on the top face prevent unwanted movement or rotation

APPLICATIONS

- Securing cable trays and ladders onto channel (strut)
- Using an angle fitting to make a right-angle connection between two lengths of channel
- Fixing of channel supports to strut
- Applications where the nut does not need to be held in place
- Suitable for placing inside the channel, both for the fixing of channel accessories or brackets to it
- Fits all channel heights



Disclaimer: while every reasonable effort has been made to ensure that this document is correct at the time of printing, Hobson Engineering®, its agencies and employees disclaim all liability in respect to anything or the consequences of anything done or omitted regarding the whole or any part of this document.

Bolt Tension | Anti-Vibration | Product Reliability | Traceability

hobson.com.au **QUALITY FASTENERS SINCE 1935**



231214DYK