

DID YOU KNOW?

about our...



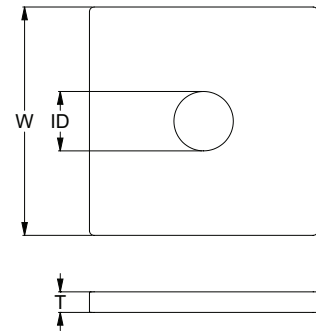
**NEW
PRODUCT**

Square Washer – HDG

SQUARE WASHER

HOT DIP GALVANISED / HEC / MILD STEEL

Part	Diameter	Width	Inner Diameter	Thickness
		W (mm)	ID (mm)	T (mm)
WSMSGM08~	M8	38	9	3
WSMSGM10~	M10	38 - 50	11	3 - 6
WSMSGM12~	M12	38 - 75	13	3 - 6
WSMSGM14~	M14	50	15	3
WSMSGM16~	M16	50 - 100	17	3 - 10
WSMSGM20~	M20	50 - 125	21	3 - 12
WSMSGM24~	M24	65 - 100	25	5 - 12
WSMSGM30~	M30	75 - 100	31	5 - 12
WSMSGM36~	M36	75 - 100	38	6 - 12



APPLICATIONS

- Cover oversized and slotted holes in bolted connections
- Use with bolts and set screws for timber framing

FEATURES

- Flat edges and greater contact friction to resist turning during tightening
- Provides a larger bearing surface than a round washer

Disclaimer: while every reasonable effort has been made to ensure that this document is correct at the time of printing, Hobson Engineering®, its agencies and employees disclaim all liability in respect to anything or the consequences of anything done or omitted regarding the whole or any part of this document.

Bolt Tension | Anti-Vibration | Product Reliability | Traceability

hobson.com.au **QUALITY FASTENERS SINCE 1935**

