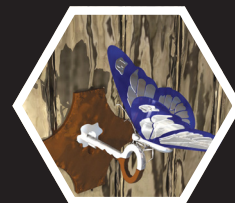


DID YOU KNOW?

about our...



**NEW
PRODUCT**

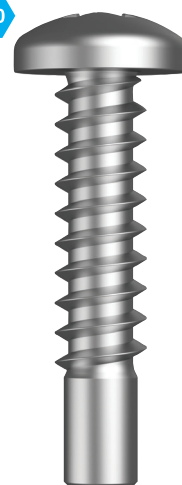
Self-Tapping Pan Phillips Pilot Point

SELF-TAPPING PAN PHILLIPS PILOT POINT 410 STAINLESS / ANSI B18.6.3 / 410



Part	Qfind	Size	Length
			(inch)
T41PSPP0620075	QG001	6	3/4"
T41PSPP0620100	QG090	6	1"
T41PSPP0620125	QG002	6	1-1/4"
T41PSPP0620175	QG012	6	1-3/4"
T41PSPP0818175	QG011	8	1-3/4"

410



FEATURES

- The pilot point fits in a pre-drilled pilot (guiding) hole, which speeds alignment during automated assembly

APPLICATIONS

- Manufacturing assembly line
- Precision fabrication



You can download this
Test Certificate and/or
Report from our website:

hobson.com.au

Disclaimer: while every reasonable effort has been made to ensure that this document is correct at the time of printing, Hobson Engineering®, its agencies and employees disclaim all liability in respect to anything or the consequences of anything done or omitted regarding the whole or any part of this document. HEC product marking is the manufacturing mark of Hobson Engineering. HEC is a registered trademark of Hobson Engineering.

Bolt Tension | Anti-Vibration | Product Reliability | Traceability

hobson.com.au QUALITY FASTENERS SINCE 1935

