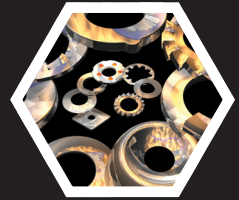


DID YOU KNOW?

about our...



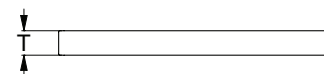
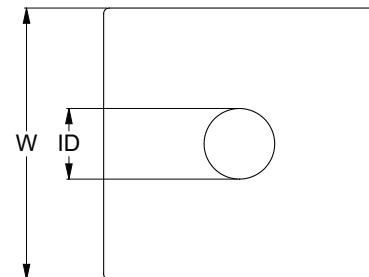
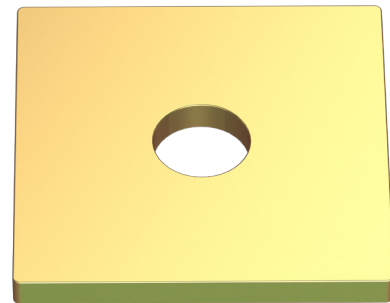
**NEW
PRODUCT**

Square Washer

SQUARE WASHER

ZINC YELLOW PASSIVATE / HEC / MILD STEEL

Part	Diameter	Width	Inner Diameter	Thickness
		W (mm)	ID (mm)	T (mm)
WSMSYM10038030	M10	38	11	3
WSMSYM10050030	M10	50	11	3
WSMSYM12050030	M12	50	13	3
WSMSYM12050050	M12	50	13	5
WSMSYM16050050	M16	50	17	5
WSMSYM16065050	M16	65	17	5



APPLICATIONS

- Covers oversized and slotted holes in bolted connections
- Use with bolts and set screws for timber framing

FEATURES

- Flat edges and greater contact friction to resist turning during tightening
- Provides a larger bearing surface than a round washer

Disclaimer: while every reasonable effort has been made to ensure that this document is correct at the time of printing, Hobson Engineering®, its agencies and employees disclaim all liability in respect to anything or the consequences of anything done or omitted regarding the whole or any part of this document. HEC product marking is the manufacturing mark of Hobson Engineering. HEC is a registered trademark of Hobson Engineering.

Bolt Tension | Anti-Vibration | Product Reliability | Traceability

hobson.com.au **QUALITY FASTENERS SINCE 1935**



240325DYK