

# DID YOU KNOW?

about our...



**NEW  
PRODUCT**

## Furniture Connector Nut

### FURNITURE CONNECTOR NUT NICKEL PLATED / HEC / MILD STEEL



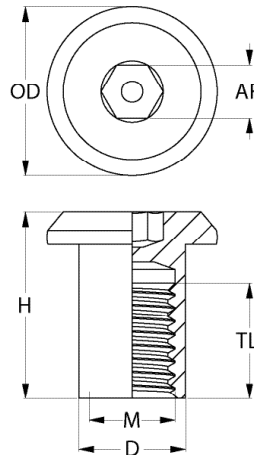
Part	Nominal Size	Thread Length	Diameter	Outer Diameter	Height	iHEX Drive Size
	M (mm)	TL (mm)	D (mm)	OD (mm)	H (mm)	AF (mm)
HFNCMSNCM06	M6	9	7.80	12.5	14.5	4
HFNCMSNCM08	M8	11	9.85	16.0	17.5	5

#### APPLICATIONS

- For use with Hobson HFBCMSNCM furniture connector bolts
- Nuts are single length, but bolts are available in multiple lengths depending on material thickness
- Wooden furniture and cabinetry

#### FEATURES

- Use standard hex wrenches (allen keys)
- Nickel plated for enhanced appearance in timber
- Features same head size and shape as connector bolts for an identical aesthetic exterior



Disclaimer: while every reasonable effort has been made to ensure that this document is correct at the time of printing, Hobson Engineering®, its agencies and employees disclaim all liability in respect to anything or the consequences of anything done or omitted regarding the whole or any part of this document. HEC product marking is the manufacturing mark of Hobson Engineering. HEC is a registered trademark of Hobson Engineering.

Bolt Tension | Anti-Vibration | Product Reliability | Traceability

[hobson.com.au](http://hobson.com.au) **QUALITY FASTENERS SINCE 1935**



240507DYK