

# DID YOU KNOW?

about our...

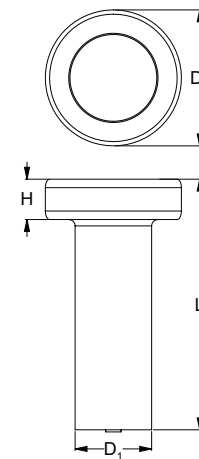


**NEW  
PRODUCT**

## Shear Connector Stud

### SHEAR CONNECTOR STUD PLAIN / AS 1554.2 / SD TYPE / CARBON STEEL

Part	Shaft Diameter	Head Diameter	Head Height	Length
	D1 (mm)	D2 (mm)	H (mm)	L (mm)
MSSMSSD-160075	16	32	8	75
MSSMSSD-160100	16	32	8	100
MSSMSSD-160125	16	32	8	125
MSSMSSD-160150	16	32	8	150
MSSMSSD-190075	19	32	10	75
MSSMSSD-190090	19	32	10	90
MSSMSSD-190095	19	32	10	95
MSSMSSD-190100	19	32	10	100
MSSMSSD-190115	19	32	10	115
MSSMSSD-190125	19	32	10	125
MSSMSSD-190150	19	32	10	150
MSSMSSD-190175	19	32	10	175
MSSMSSD-190200	19	32	10	200
MSSMSSD-190250	19	32	10	250
MSSMSSD-220100	22	35	10	100
MSSMSSD-220125	22	35	10	125
MSSMSSD-220150	22	35	10	150
MSSMSSD-220175	22	35	10	175
MSSMSSD-220200	22	35	10	200
MSSMSSD-220250	22	35	10	250



You can download this  
Test Certificate and/or  
Report from our website:

[hobson.com.au](http://hobson.com.au)

Disclaimer: while every reasonable effort has been made to ensure that this document is correct at the time of printing, Hobson Engineering®, its agencies and employees disclaim all liability in respect to anything or the consequences of anything done or omitted regarding the whole or any part of this document. HEC product marking is the manufacturing mark of Hobson Engineering. HEC is a registered trademark of Hobson Engineering.

Bolt Tension | Anti-Vibration | Product Reliability | Traceability

[hobson.com.au](http://hobson.com.au) **QUALITY FASTENERS SINCE 1935**



# DID YOU KNOW?

about our...



**NEW  
PRODUCT**

## Shear Connector Stud

### APPLICATIONS

- Shear studs provide a structural connection between the steel structure and concrete poured to form a slab
- By creating a shear connection, the shear stud will generate composite action between the steel and concrete, improving the efficiency of the structure
- Bridges, industrial structures and high-rise buildings

### FEATURES

- Clean Beam and Thru-Deck Ferrules sold separately
- Packed in recyclable cardboard cartons for easy storage and handling
- Test Certificates include results for ultimate tensile strength, yield strength and elongation after fracture



Recommended for use with:

#### CERAMIC FERRULE — THRU-DECK CERAMIC / AS 1554.2 DF / CERAMIC

Part	Diameter
MSSCMDf~	16–22

#### CERAMIC FERRULE — CLEAN BEAM CERAMIC / AS 1554.2 UF / CERAMIC

Part	Diameter
MSSCMUF~	16–22



Disclaimer: while every reasonable effort has been made to ensure that this document is correct at the time of printing, Hobson Engineering®, its agencies and employees disclaim all liability in respect to anything or the consequences of anything done or omitted regarding the whole or any part of this document. HEC product marking is the manufacturing mark of Hobson Engineering. HEC is a registered trademark of Hobson Engineering.

Bolt Tension | Anti-Vibration | Product Reliability | Traceability

[hobson.com.au](http://hobson.com.au) **QUALITY FASTENERS SINCE 1935**



Page 2 of 2

240520DYK