

DID YOU KNOW?

about our...



**NEW
PRODUCT**

Power-TX[®] Eye Socket

POWER-TX[®] EYE SOCKET
STEEL / HEC — TO SUIT M12 POWER-TX[®] EYE



Part	QFind	Diameter		Height	Width
		AF1 (in)	AF2 (mm)	L (mm)	W (mm)
MXSESM12	MXS100	1/2"	13	50	44

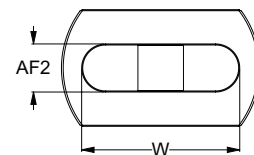
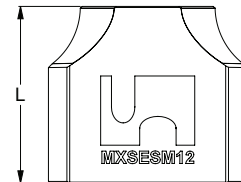
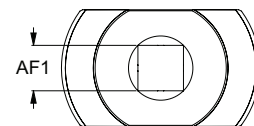
APPLICATIONS

- Installation tool for M12 Power-TX[®] Eye

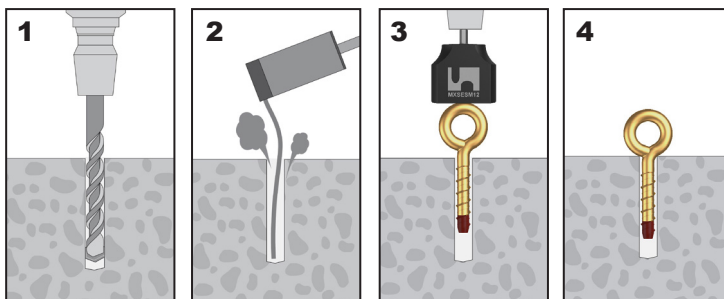
FEATURES

- Fast, ergonomic installation tool
- Hardened steel for long life

Used with **MXEMSYM120075**



Installation



POWER-TX

Disclaimer: while every reasonable effort has been made to ensure that this document is correct at the time of printing, Hobson Engineering®, its agencies and employees disclaim all liability in respect to anything or the consequences of anything done or omitted regarding the whole or any part of this document. HEC product marking is the manufacturing mark of Hobson Engineering. HEC is a registered trademark of Hobson Engineering.

Bolt Tension | Anti-Vibration | Product Reliability | Traceability

hobson.com.au **QUALITY FASTENERS SINCE 1935**

