

DID YOU KNOW?

about our...



**MORE
SIZES +**

Lifting Point D Ring Pivot

Weld-on lifting points add permanent anchor points onto spreader beams or heavy equipment.

LIFTING POINT D RING PIVOT GRADE 80 / POWDER COAT / HEC

Part	QFind	WLL		Dimensions			
		(tonne)		(mm)			
		0°	90°	B	C	D	W
ULLW08PDP01	LW08DP1	1.12	1.12	41	78.5	13.1	38.0
ULLW08PDP02	LW08DP2	2.00	2.00	42	88.0	14.0	40.0
ULLW08PDP03	LW08DP3	3.50	3.50	46	94.0	17.0	42.5
ULLW08PDP04	LW08DP4	5.30	5.30	55	118.0	22.0	50.0
ULLW08PDP05	LW08DP5	5.30	5.30	55	118.0	22.0	50.0
ULLW08PDP08	LW08DP8	8.00	8.00	70	141.0	26.5	70.5
ULLW08PDP10	LW08DP10	10.00	10.00	85	165.0	28.0	76.0
ULLW08PDP15	LW08DP15	15.00	15.00	97	188.0	34.0	90.0

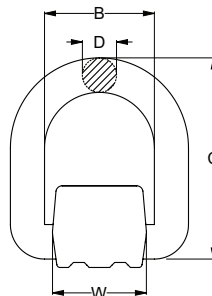


Spring to maintain ring position

**NEW
SIZES +**

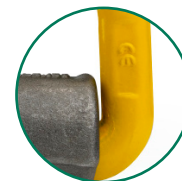
FEATURES

- Can be welded onto any carbon steel surface
- Lifting point
- Fixed anchor point for spreader beam attachment
- Anchor point for load restraint
- Weldable strap with internal spring



MARKINGS:

- **CE**
(European Conformity)
- **WLL**
(Working Load Limit)
- **Trace code**
(Linked to certificate online)
- **Manufacturer's mark**
- **Size**



You can download this Test Certificate and/or Report from our website:

hobson.com.au

Disclaimer: while every reasonable effort has been made to ensure that this document is correct at the time of printing, Hobson Engineering®, its agencies and employees disclaim all liability in respect to anything or the consequences of anything done or omitted regarding the whole or any part of this document. HEC product marking is the manufacturing mark of Hobson Engineering. HEC is a registered trademark of Hobson Engineering.

Bolt Tension | Anti-Vibration | Product Reliability | Traceability

hobson.com.au **QUALITY FASTENERS SINCE 1935**

