

DID YOU KNOW?

about our...



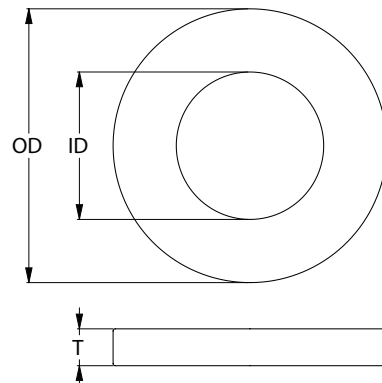
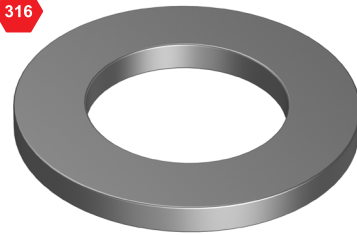
**NEW
PRODUCT**

Flat Round Washer Metric

FLAT ROUND WASHER — METRIC 316 STAINLESS / DIN 433 / A4

Part	Diameter	Outer Diameter	Inner Diameter	Thickness
		OD (mm)	ID (mm)	T (mm)
WR16P4M02	M2	4.5	2.2	0.3
WR16P4M025	M2.5	5.0	2.7	0.5
WR16P4M03	M3	6.0	3.2	0.5
WR16P4M04	M4	8.0	4.3	0.5
WR16P4M05	M5	9.0	5.3	1.0
WR16P4M06	M6	11.0	6.4	1.6
WR16P4M08	M8	15.0	8.4	1.6
WR16P4M10	M10	18.0	10.5	1.6
WR16P4M12	M12	20.0	13.0	2.0
WR16P4M16	M16	28.0	17.0	2.5
WR16P4M20	M20	34.0	21.0	3.0

316



APPLICATIONS

- Designed for use with cheese head screws

FEATURES

- Smaller OD than DIN 125A washers



You can download this
Test Certificate and/or
Report from our website:

hobson.com.au

Disclaimer: while every reasonable effort has been made to ensure that this document is correct at the time of printing, Hobson Engineering®, its agencies and employees disclaim all liability in respect to anything or the consequences of anything done or omitted regarding the whole or any part of this document. HEC product marking is the manufacturing mark of Hobson Engineering. HEC is a registered trademark of Hobson Engineering.

Bolt Tension | Anti-Vibration | Product Reliability | Traceability

hobson.com.au **QUALITY FASTENERS SINCE 1935**



240709DYK