

# DID YOU KNOW?

about our...



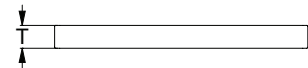
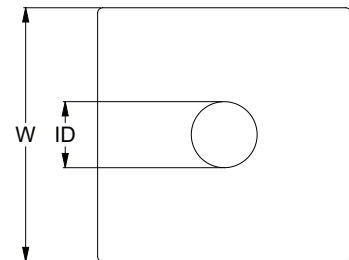
**MORE  
SIZES +**

## Square Washer Hardened

### SQUARE WASHER HARDENED HOT DIP GALVANISED / HEC / 35–41 HRC

Part	Diameter	Inner Diameter	Width	Thickness
		ID (mm)	W (mm)	T (mm)
WSHTGM16050100	M16	17.3	50	10
WSHTGM16060040	M16	17.3	60	4
WSHTGM20060040	M20	21.3	60	4
WSHTGM24060040	M24	25.3	60	4
WSHTGM30075060	M30	31.4	75	6
WSHTGM24065040	M24	25.3	65	4
WSHTGM30075060	M30	31.4	75	6
WSHTGM36075060	M36	38.4	75	6

**NEW  
SIZES +**



#### APPLICATIONS

- Hardened square washers suitable for high-tensile bolting
- Sizes per state-based department of transport specifications
- Used with oversized or slotted holes drilled in steelwork

#### FEATURES

- 35–41 HRC



You can download this  
Test Certificate and/or  
Report from our website:

[hobson.com.au](http://hobson.com.au)

Disclaimer: while every reasonable effort has been made to ensure that this document is correct at the time of printing, Hobson Engineering®, its agencies and employees disclaim all liability in respect to anything or the consequences of anything done or omitted regarding the whole or any part of this document. HEC product marking is the manufacturing mark of Hobson Engineering. HEC is a registered trademark of Hobson Engineering.

Bolt Tension | Anti-Vibration | Product Reliability | Traceability

[hobson.com.au](http://hobson.com.au) **QUALITY FASTENERS SINCE 1935**

