

DID YOU KNOW?

about our...



**NEW
PRODUCT**

HDG Cable Tray Bolt

CABLE TRAY BOLT HOT DIP GALVANISED / HEC / MILD STEEL

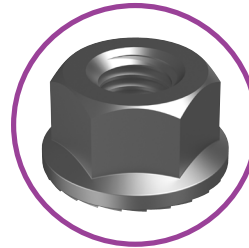
Part	QFind	Diameter	Length	Head Height	Across Flats	Thread Size
		D (mm)	L (mm)	H (mm)	AF (mm)	T (mm)
BRMSGTCM10022	HTBG	M10	22	3.8-4.2	16.8-17.0	12.0-12.5



Recommended for use with:

CABLE TRAY NUT HOT DIP GALVANISED / HEC / MILD STEEL

Part	Diameter
NFMSGTSCM10	M10

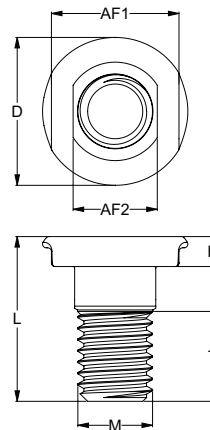


APPLICATIONS

- Installing splice plates, brackets or other accessories into cable trays or ladders

FEATURES

- Smooth head to eliminate sheathing the cable
- Square neck to fit into cable tray nut (counterbore)
- Flat sides on neck/shoulder of bolt to eliminate turning inside hole on the cable tray ladder



Disclaimer: while every reasonable effort has been made to ensure that this document is correct at the time of printing, Hobson Engineering®, its agencies and employees disclaim all liability in respect to anything or the consequences of anything done or omitted regarding the whole or any part of this document. HEC product marking is the manufacturing mark of Hobson Engineering. HEC is a registered trademark of Hobson Engineering.

Bolt Tension | Anti-Vibration | Product Reliability | Traceability

hobson.com.au **QUALITY FASTENERS SINCE 1935**



240718DYK