

DID YOU KNOW?

about our...



**NEW
PRODUCT**

Barrel Nut Pan Internal HEX

BARREL NUT PAN INTERNAL HEX 316 STAINLESS / HEC / A4



316



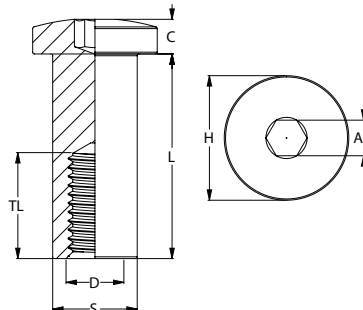
Part	Nominal Size	Length	Thread Length	Diameter	Head Height	Head Diameter	Drive Size
	D (mm)	L (mm)	TL (mm)	S (mm)	C (mm)	H (mm)	AF (mm)
NB16PPICM06	6	30	26	8	4.7	14	4
NB16PPICM08	8	34	27	10	5.8	16	5
NB16PPICM10	10	34	28	13	6.3	18	6
NB16PPICM12	12	40	34	15	8.4	21	8

APPLICATIONS

- Furniture connections
- Can be used with steel, timber or heavy-duty plastic
- Can replace nut on masonry fixings

FEATURES

- Decorative nut installed on protruding male thread
- Internal HEX drive for increased leverage when tightening
- 316 stainless steel for enhanced corrosion resistance



You can download this
Test Certificate and/or
Report from our website:

hobson.com.au

Disclaimer: while every reasonable effort has been made to ensure that this document is correct at the time of printing, Hobson Engineering®, its agencies and employees disclaim all liability in respect to anything or the consequences of anything done or omitted regarding the whole or any part of this document. HEC product marking is the manufacturing mark of Hobson Engineering. HEC is a registered trademark of Hobson Engineering.

Bolt Tension | Anti-Vibration | Product Reliability | Traceability

hobson.com.au **QUALITY FASTENERS SINCE 1935**



240909DYK