

DID YOU KNOW?

about our...

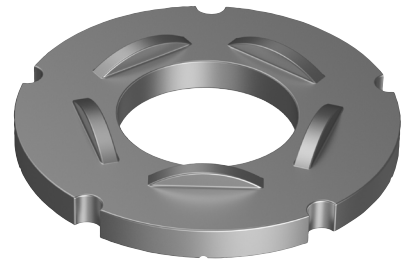


**NEW
PRODUCT**

Load Indicator Washer

LOAD INDICATOR WASHER MECHANICAL GALVANISED / ASTM F959M / CLASS 8.8

Part	Diameter	Outer Diameter	Inner Diameter	Thickness
		OD (mm)	ID (mm)	T (mm)
WISTGM12	M12	27.0	13.0	2.6
WISTGM16	M16	36.0	17.0	3.2
WISTGM20	M20	45.0	21.0	3.6
WISTGM24	M24	54.0	25.0	4.0
WISTGM30	M30	67.5	31.5	4.0
WISTGM36	M36	81.0	38.0	4.8

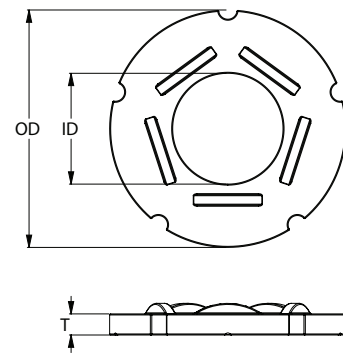


APPLICATIONS

- Tensioned (TF/TB) connections in structural steelwork

FEATURES

- Calibrated load-indicating washer to the requirements of ASTM F959M
- Use with feeler gauges to verify minimum tension has been achieved
- 3-character trace code stamped on the washer for product verification
- Accepted installation method as per AS 4100 and AS 5131 Section 8.5.8
- LIWs are individual bolt load cells that measure pretension developed during tightening, regardless of torque



You can download this
Test Certificate and/or
Report from our website:

hobson.com.au

Disclaimer: while every reasonable effort has been made to ensure that this document is correct at the time of printing, Hobson Engineering®, its agencies and employees disclaim all liability in respect to anything or the consequences of anything done or omitted regarding the whole or any part of this document. HEC product marking is the manufacturing mark of Hobson Engineering. HEC is a registered trademark of Hobson Engineering.

Bolt Tension | Anti-Vibration | Product Reliability | Traceability

hobson.com.au QUALITY FASTENERS SINCE 1935

