

DID YOU KNOW?

about our...



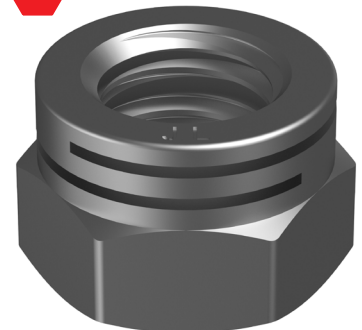
**NEW
PRODUCT**

ESL Dual Slot Self-Lock Nut

ESL DUAL SLOT SELF-LOCK NUT 316 STAINLESS / NFE 25 411 / A4-80 / LANFRANCO

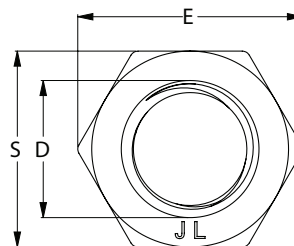
Part	QFind	D	Pitch	H	M	S	E
			(mm)	(mm)	(mm)	(mm)	(mm)
NJ16NESLM08	ESL080125ZHST00	M8	1.25	8.8	4.8	13	14.38
NJ16NESLM10	ESL100150ZHST00	M10	1.50	11.0	6.0	16	17.77
NJ16NESLM12	ESL120175ZHST00	M12	1.75	13.0	7.2	18	20.03
NJ16NESLM16	ESL160200ZHST00	M16	2.00	17.0	9.5	24	26.75
NJ16NESLM20	ESL200250ZHST00	M20	2.50	21.0	12.0	30	32.95
NJ16NESLM24	ESL240300ZHST00	M24	3.00	25.5	15.4	36	39.55

316



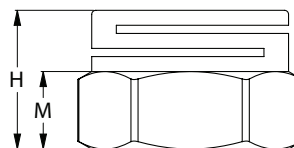
APPLICATIONS

- Mining and processing
- Railway and transportation
- Energy
- Military
- Industrial



FEATURES

- Extremely reliable
- Consistent prevailing torque
- No galling
- Locking slots are independent of bolt tension
- J.Lanfranco Certificate of Conformance available



J.LANFRANCO

LOCKNUTS FOR CRITICAL BOLTED JOINTS



You can download this
Test Certificate and/or
Report from our website:

hobson.com.au

Disclaimer: while every reasonable effort has been made to ensure that this document is correct at the time of printing, Hobson Engineering®, its agencies and employees disclaim all liability in respect to anything or the consequences of anything done or omitted regarding the whole or any part of this document. HEC product marking is the manufacturing mark of Hobson Engineering. HEC is a registered trademark of Hobson Engineering.

Bolt Tension | Anti-Vibration | Product Reliability | Traceability

hobson.com.au **QUALITY FASTENERS SINCE 1935**

