

DID YOU KNOW?

about our...



**NEW
PRODUCT**

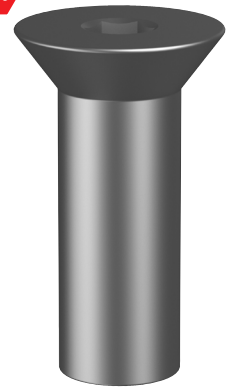
Barrel Nut Countersunk iHEX

BARREL NUT COUNTERSUNK iHEX 316 STAINLESS / HEC / A4



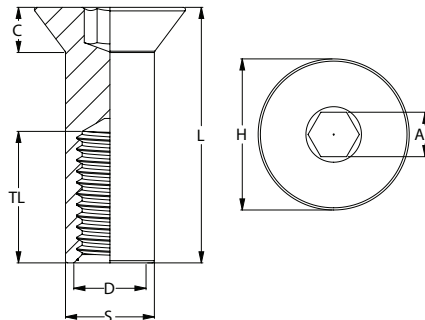
| Part | Nominal Size | Length | Thread Length | Shank Diameter | Head Height | Head Diameter | Drive Size |
|-------------|--------------|--------|---------------|----------------|-------------|---------------|------------|
| | D (mm) | L (mm) | TL (mm) | S (mm) | C (mm) | H (mm) | AF (mm) |
| NB16PCICM03 | M3 | 8.0 | 3.0 | 5.0 | 1.6 | 8.0 | 2.0 |
| NB16PCICM04 | M4 | 12.0 | 3.0 | 6.0 | 2.1 | 10.0 | 2.5 |
| NB16PCICM05 | M5 | 20.0 | 11.0 | 7.0 | 2.6 | 12.0 | 3.0 |
| NB16PCICM06 | M6 | 23.0 | 13.0 | 8.0 | 3.1 | 14.0 | 4.0 |
| NB16PCICM08 | M8 | 27.0 | 16.0 | 10.0 | 3.7 | 15.0 | 5.0 |
| NB16PCICM10 | M10 | 27.0 | 16.0 | 12.0 | 4.2 | 20.0 | 6.0 |
| NB16PCICM12 | M12 | 31.0 | 18.0 | 14.0 | 5.2 | 24.0 | 8.0 |

316



APPLICATIONS

- Furniture
- Hidden connections
- Timber connections
- Double-ended countersunk connections
- Replaces nut in Tygabolt® anchors to provide a countersunk finish
- Used with 316 countersunk socket cap screws for a matching appearance on both sides



FEATURES

- 316 stainless steel for enhanced corrosion resistance
- Installed on the protruding male thread as a decorative nut
- Internally threaded
- High-end finish for architectural joinery



You can download this
Test Certificate and/or
Report from our website:

hobson.com.au

Disclaimer: while every reasonable effort has been made to ensure that this document is correct at the time of printing, Hobson Engineering®, its agencies and employees disclaim all liability in respect to anything or the consequences of anything done or omitted regarding the whole or any part of this document. HEC product marking is the manufacturing mark of Hobson Engineering. HEC is a registered trademark of Hobson Engineering.

Bolt Tension | Anti-Vibration | Product Reliability | Traceability

hobson.com.au QUALITY FASTENERS SINCE 1935



250107DYK