

DID YOU KNOW?

about our...



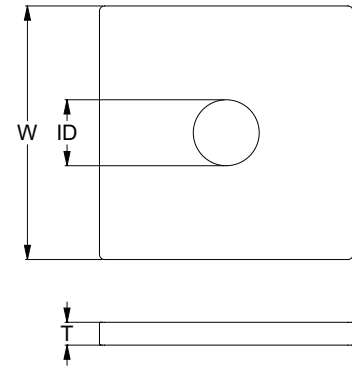
**MORE
SIZES +**

Square Washer – Plain

SQUARE WASHER PLAIN / HEC / MILD STEEL

Part	Diameter	Inner Diameter	Width	Thickness
		ID (mm)	W (mm)	T (mm)
WSMSPM10050030	M10	11.0	50	3
WSMSPM10050050	M10	11.0	50	5
WSMSPM12040050	M12	13.0	40	5
WSMSPM12050030	M12	13.0	50	3
WSMSPM12050050	M12	13.0	50	5
WSMSPM12065050	M12	13.0	65	5
WSMSPM16050050	M16	17.0	50	5
WSMSPM16050060	M16	17.0	50	6
WSMSPM16065060	M16	17.0	65	6
WSMSPM16075060	M16	17.0	75	6
WSMSPM20050060	M20	21.0	50	6
WSMSPM20065060	M20	21.0	65	6
WSMSPM20075060	M20	21.0	75	6
WSMSPM24065050	M24	25.0	65	5

**NEW
SIZES +**



APPLICATIONS

- Used with oversized or slotted holes in structural steelwork
- Commonly used in crusher plants
- Any application where welding is required

FEATURES

- Plain finish allows application of a variety of coatings
- Flat edges and greater contact friction to resist turning during tightening
- Provides a larger bearing surface than a round washer

Disclaimer: while every reasonable effort has been made to ensure that this document is correct at the time of printing, Hobson Engineering®, its agencies and employees disclaim all liability in respect to anything or the consequences of anything done or omitted regarding the whole or any part of this document. HEC product marking is the manufacturing mark of Hobson Engineering. HEC is a registered trademark of Hobson Engineering.

Bolt Tension | Anti-Vibration | Product Reliability | Traceability

hobson.com.au **QUALITY FASTENERS SINCE 1935**

