

DID YOU KNOW?

about our...



**NEW
PRODUCT**

Round End Flat Plate 3 Hole

ROUND END FLAT PLATE 3 HOLE HOT DIP GALVANISED / HEC / MILD STEEL

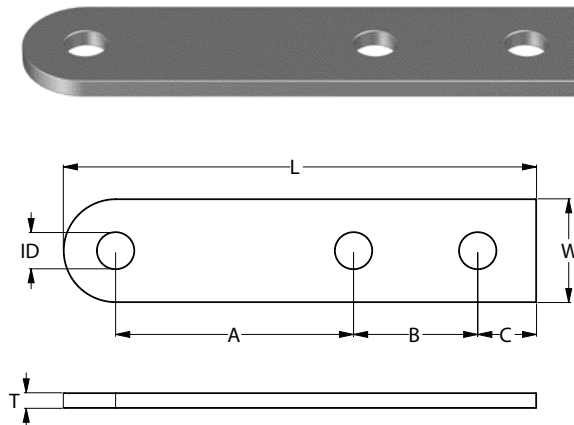
Part	QFind	Length	Width	Inner Diameter	Measurements			Thickness
		L (mm)	W (mm)	ID (mm)	A (mm)	B (mm)	C (mm)	T (mm)
GFPMMSG2324	H2324	181	40	14.5	91	47.5	22.5	6

APPLICATIONS

- For joining 41 mm wide channels together at any angle
- Used with strut nuts with spring
- Hole size to suit M12 bolting

FEATURES

- Part of Hobson's flat plate range
- Round end prevents overhang when connecting angles other than 90 or 180 degrees
- HDG for high corrosion resistance



Disclaimer: while every reasonable effort has been made to ensure that this document is correct at the time of printing, Hobson Engineering®, its agencies and employees disclaim all liability in respect to anything or the consequences of anything done or omitted regarding the whole or any part of this document. HEC product marking is the manufacturing mark of Hobson Engineering. HEC is a registered trademark of Hobson Engineering.

Bolt Tension | Anti-Vibration | Product Reliability | Traceability

hobson.com.au **QUALITY FASTENERS SINCE 1935**



250313DYK