

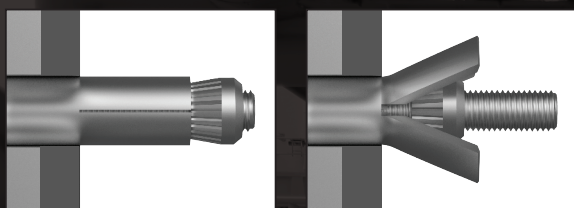
DID YOU KNOW?

about our...



**SPOT
LIGHT**

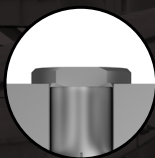
HBS-Bolt® Range



Engineering innovation powered by our robust technical capabilities and the assurance of a NATA-accredited laboratory.



HEX



CSK



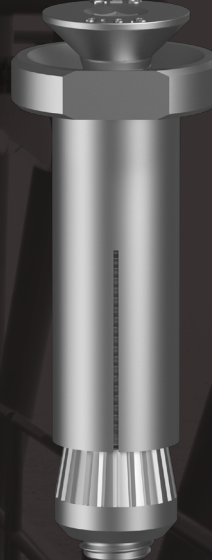
FLUSH

HEX



KBB88GHM
KBB16PHM

CSK



KBB88GKM

FLUSH



KBB88GUM

HBS-BOLT®

HEX, CSK & FLUSH



Disclaimer: while every reasonable effort has been made to ensure that this document is correct at the time of printing, Hobson Engineering®, its agencies and employees disclaim all liability in respect to anything or the consequences of anything done or omitted regarding the whole or any part of this document. HEC product marking is the manufacturing mark of Hobson Engineering. HEC is a registered trademark of Hobson Engineering.

Bolt Tension | Anti-Vibration | Product Reliability | Traceability

hobson.com.au **QUALITY FASTENERS SINCE 1935**



Page 1 of 5

250318DYK

DID YOU KNOW?

about our...

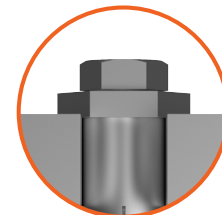


**SPOT
LIGHT**

HBS-Bolt® Range

HBS-BOLT® HEX — BLIND INSTALL HOT DIP GALVANISED / HEC / CLASS 8.8

| Part | QFind | Size | Length | Grip | Hex Size |
|----------------|-----------------|------|--------|-------|-------------|
| | | | (mm) | (mm) | (mm) |
| KBB88GHM080050 | HBG850 | M8 | 50 | 3–22 | 13 |
| KBB88GHM080070 | HBG870 | M8 | 70 | 22–41 | 13 |
| KBB88GHM080090 | HBG890 | M8 | 90 | 41–60 | 13 |
| KBB88GHM100055 | HBG1055 | M10 | 55 | 3–22 | 16 |
| KBB88GHM100070 | HBG1070 | M10 | 70 | 22–41 | 16 |
| KBB88GHM100090 | HBG1090 | M10 | 90 | 41–60 | 16 |
| KBB88GHM120060 | HBG1260 | M12 | 60 | 3–25 | 18 |
| KBB88GHM120080 | HBG1280 | M12 | 80 | 25–47 | 18 |
| KBB88GHM120110 | HBG12110 | M12 | 110 | 47–69 | 18 |
| KBB88GHM160080 | HBG1680 | M16 | 80 | 12–29 | 24 |
| KBB88GHM160100 | HBG16100 | M16 | 100 | 29–50 | 24 |
| KBB88GHM160120 | HBG16120 | M16 | 120 | 50–71 | 24 |
| KBB88GHM200090 | HBG2090 | M20 | 90 | 12–34 | 30 |
| KBB88GHM200120 | HBG20120 | M20 | 120 | 34–60 | 30 |
| KBB88GHM200140 | HBG20140 | M20 | 140 | 60–86 | 30 |



HEX



3-part assembly

» M8
» M10
» M12



5-part assembly

» M16
» M20

APPLICATIONS

- Fixing steel to hollow steel sections
- Use with square, rectangle and circular hollow sections
- High shear and tensile capacities
- Large grip range
- One-sided installation with HEX head bolt
- Steel framework, including gantries, bridges, stadiums and transmission towers



You can download this
Test Certificate and/or
Report from our website:

hobson.com.au

Disclaimer: while every reasonable effort has been made to ensure that this document is correct at the time of printing, Hobson Engineering®, its agencies and employees disclaim all liability in respect to anything or the consequences of anything done or omitted regarding the whole or any part of this document. HEC product marking is the manufacturing mark of Hobson Engineering. HEC is a registered trademark of Hobson Engineering.

Bolt Tension | Anti-Vibration | Product Reliability | Traceability

hobson.com.au QUALITY FASTENERS SINCE 1935



Page 2 of 5

250318DYK

DID YOU KNOW?

about our...



**SPOT
LIGHT**

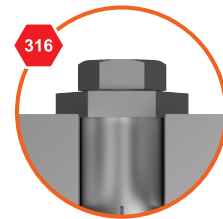
HBS-Bolt® Range

HBS-BOLT® HEX — BLIND INSTALL 316 STAINLESS STEEL / HEC / A4

| Part | QFind | Size | Length (mm) | Grip (mm) | Hex Size (mm) |
|----------------|------------------|------|----------------|--------------|---------------------|
| KBB16PHM100055 | HBA41055 | M10 | 55 | 3–22 | 16 |
| KBB16PHM120060 | HBA41260 | M12 | 60 | 3–25 | 18 |
| KBB16PHM160080 | HBA41680 | M16 | 80 | 12–29 | 24 |
| KBB16PHM160100 | HBA416100 | M16 | 100 | 29–50 | 24 |
| KBB16PHM200090 | HBA42090 | M20 | 90 | 12–34 | 30 |

APPLICATIONS

- Fixing steel to hollow steel sections
- Use with square, rectangle and circular hollow sections
- High shear and tensile capacities
- Large grip range
- One-sided installation with HEX head bolt
- Steel framework, including gantries, bridges, stadiums and transmission towers
- Stainless steel applications



HEX



3-part assembly

- » M10
- » M12



5-part assembly

- » M16
- » M20



You can download this
Test Certificate and/or
Report from our website:

hobson.com.au

Disclaimer: while every reasonable effort has been made to ensure that this document is correct at the time of printing, Hobson Engineering®, its agencies and employees disclaim all liability in respect to anything or the consequences of anything done or omitted regarding the whole or any part of this document. HEC product marking is the manufacturing mark of Hobson Engineering. HEC is a registered trademark of Hobson Engineering.

Bolt Tension | Anti-Vibration | Product Reliability | Traceability

hobson.com.au QUALITY FASTENERS SINCE 1935



Page 3 of 5

250318DYK

DID YOU KNOW?

about our...



**SPOT
LIGHT**

HBS-Bolt® Range

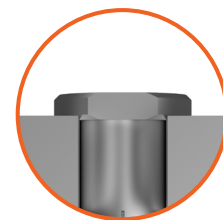
The **HBS-Bolt® CSK** is suitable for various steel connections due to its high shear capacity and large grip range. This enables installation where there is limited access as well as one-sided installation for fixing steel to hollow sections.

HBS-BOLTS® CSK — BLIND INSTALL HOT DIP GALVANISED / HEC / CLASS 8.8

| Part | QFind | Size | Length (mm) | Grip (mm) | Hex Size (mm) |
|----------------|------------------|------|----------------|--------------|---------------------|
| KBB88GKM080050 | HBKG850 | M8 | 50 | 3–22 | 5 |
| KBB88GKM080070 | HBKG870 | M8 | 70 | 22–41 | 5 |
| KBB88GKM080090 | HBKG890 | M8 | 90 | 41–60 | 5 |
| KBB88GKM100050 | HBKG1050 | M10 | 50 | 3–22 | 6 |
| KBB88GKM100070 | HBKG1070 | M10 | 70 | 22–41 | 6 |
| KBB88GKM100090 | HBKG1090 | M10 | 90 | 41–60 | 6 |
| KBB88GKM120055 | HBKG1255 | M12 | 55 | 3–25 | 8 |
| KBB88GKM120080 | HBKG1280 | M12 | 80 | 25–47 | 8 |
| KBB88GKM120100 | HBKG12100 | M12 | 100 | 47–69 | 8 |
| KBB88GKM160070 | HBKG1670 | M16 | 70 | 12–29 | 10 |
| KBB88GKM160100 | HBKG16100 | M16 | 100 | 29–50 | 10 |
| KBB88GKM160120 | HBKG16120 | M16 | 120 | 50–71 | 10 |

APPLICATIONS

- Fixing steel to hollow steel sections
- Use with square, rectangle and circular hollow sections
- High shear and tensile capacities
- Large grip range
- One-sided installation with countersunk head bolt
- Steel framework, including gantries, bridges, stadiums and transmission towers



CSK



3-part assembly

- » M8
- » M10
- » M12



5-part assembly

- » M16



You can download this
Test Certificate and/or
Report from our website:

hobson.com.au

Disclaimer: while every reasonable effort has been made to ensure that this document is correct at the time of printing, Hobson Engineering®, its agencies and employees disclaim all liability in respect to anything or the consequences of anything done or omitted regarding the whole or any part of this document. HEC product marking is the manufacturing mark of Hobson Engineering. HEC is a registered trademark of Hobson Engineering.

Bolt Tension | Anti-Vibration | Product Reliability | Traceability

hobson.com.au QUALITY FASTENERS SINCE 1935



Page 4 of 5

250318DYK

DID YOU KNOW?

about our...



**SPOT
LIGHT**

HBS-Bolt® Range

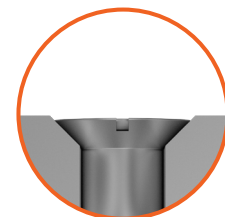
The **HBS-Bolt® FLUSH** is suitable for various steel connections due to its high shear capacity and large grip range. This enables installation where there is limited access as well as one-sided installation for fixing steel to hollow sections.

HBS-BOLT® FLUSH — BLIND INSTALL HOT DIP GALVANISED / HEC / CLASS 8.8

| Part | QFind | Size | Length (mm) | Grip (mm) | Hex Size (mm) |
|----------------|------------------|------|----------------|--------------|---------------------|
| KBB88GUM080050 | HBUG850 | M8 | 50 | 8–27 | 5 |
| KBB88GUM080070 | HBUG870 | M8 | 70 | 27–46 | 5 |
| KBB88GUM080090 | HBUG890 | M8 | 90 | 46–65 | 5 |
| KBB88GUM100050 | HBUG1050 | M10 | 50 | 9–28 | 6 |
| KBB88GUM100070 | HBUG1070 | M10 | 70 | 28–47 | 6 |
| KBB88GUM100090 | HBUG1090 | M10 | 90 | 47–66 | 6 |
| KBB88GUM120055 | HBUG1255 | M12 | 55 | 10–32 | 8 |
| KBB88GUM120080 | HBUG1280 | M12 | 80 | 32–54 | 8 |
| KBB88GUM120100 | HBUG12100 | M12 | 100 | 54–76 | 8 |

APPLICATIONS

- Fixing steel to hollow steel sections
- Use with square, rectangle and circular hollow sections
- High shear and tensile capacities
- Large grip range
- One-sided installation with flush fit head
- Steel framework, including gantries, bridges, stadiums and transmission towers



FLUSH



3-part assembly

- » M8
- » M10
- » M12



You can download this
Test Certificate and/or
Report from our website:

hobson.com.au

Disclaimer: while every reasonable effort has been made to ensure that this document is correct at the time of printing, Hobson Engineering®, its agencies and employees disclaim all liability in respect to anything or the consequences of anything done or omitted regarding the whole or any part of this document. HEC product marking is the manufacturing mark of Hobson Engineering. HEC is a registered trademark of Hobson Engineering.

Bolt Tension | Anti-Vibration | Product Reliability | Traceability

hobson.com.au QUALITY FASTENERS SINCE 1935



Page 5 of 5

250318DYK