

DID YOU KNOW?

about our...



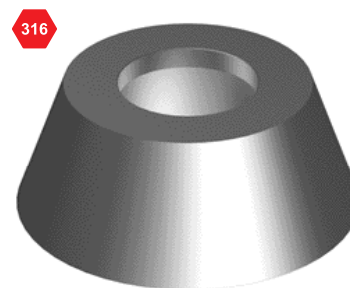
**NEW
PRODUCT**

Secure Ring

SECURE RING

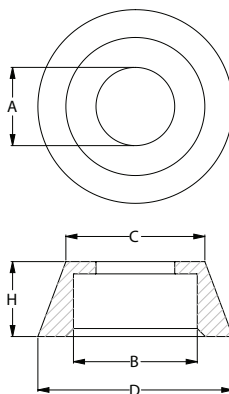
316 STAINLESS / HEC / SUIT DIN 931 933 934

Part	Nut Size	D	B	H	C	A
	(mm)	(mm)	(mm)	(mm)	(mm)	(mm)
IRS16PDM06	M6	16	10.9	6.8	11	7.0
IRS16PDM08	M8	20	14.3	8.0	15	9.0
IRS16PDM10	M10	27	18.8	10.0	20	11.0
IRS16PDM12	M12	34	21.0	12.0	26	13.5
IRS16PDM16	M16	41	26.0	16.0	30	18.0



APPLICATIONS

- Fits over the hex of DIN 931 hex bolts and DIN 933 hex set screws to create a tamper-proof finish
- Fits over DIN 934 hex nuts
- Put over the hex and use a rubber mallet to knock down and deform the shape



FEATURES

- Made from 316 stainless and can be used with 304 and 316 hex bolts



You can download this
Test Certificate and/or
Report from our website:

hobson.com.au

Disclaimer: while every reasonable effort has been made to ensure that this document is correct at the time of printing, Hobson Engineering®, its agencies and employees disclaim all liability in respect to anything or the consequences of anything done or omitted regarding the whole or any part of this document. HEC product marking is the manufacturing mark of Hobson Engineering. HEC is a registered trademark of Hobson Engineering.

Bolt Tension | Anti-Vibration | Product Reliability | Traceability

hobson.com.au QUALITY FASTENERS SINCE 1935

