

DID YOU KNOW?

about our...



**NEW
PRODUCT**

Tilt Panel Flat Joiner Plate

TILT PANEL FLAT JOINER PLATE
HOT DIP GALVANISED / HOLE SIZE-SUIT M20 2X SLOT HOLE

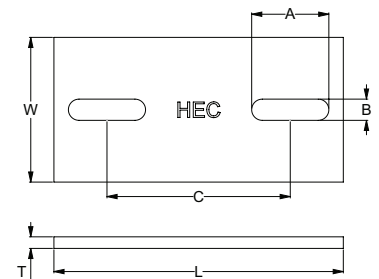
Part	QFind	L	W	T	A	B	C
		(mm)	(mm)	(mm)	(mm)	(mm)	(mm)
PPCMGJ1300150012	PCJ11	300	150	12	80	22	190
PPCMGJ1350100012	PCJ12	350	100	12	80	22	220

APPLICATIONS

- Pre-cast concrete panel connections
- For panel-to-panel connections

FEATURES

- Also known as stitching plates
- Hot dip galvanised coating



Disclaimer: while every reasonable effort has been made to ensure that this document is correct at the time of printing, Hobson Engineering®, its agencies and employees disclaim all liability in respect to anything or the consequences of anything done or omitted regarding the whole or any part of this document. HEC product marking is the manufacturing mark of Hobson Engineering. HEC is a registered trademark of Hobson Engineering.

Bolt Tension | Anti-Vibration | Product Reliability | Traceability

hobson.com.au **QUALITY FASTENERS SINCE 1935**



250610DYK