

DID YOU KNOW?

about our...



**SPOT
LIGHT**

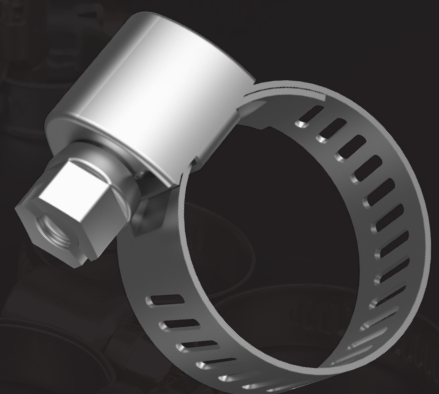
Hose Clamp Range



Heavy-Duty
T-Bolt



Perforated
High Torque



Perforated
Mini

CONX[®]TRUCT



Disclaimer: while every reasonable effort has been made to ensure that this document is correct at the time of printing, Hobson Engineering®, its agencies and employees disclaim all liability in respect to anything or the consequences of anything done or omitted regarding the whole or any part of this document. HEC product marking is the manufacturing mark of Hobson Engineering. HEC is a registered trademark of Hobson Engineering.

Bolt Tension | Anti-Vibration | Product Reliability | Traceability

hobson.com.au **QUALITY FASTENERS** SINCE 1935

Page 1 of 6



250624DYK

DID YOU KNOW?

about our...



**SPOT
LIGHT**

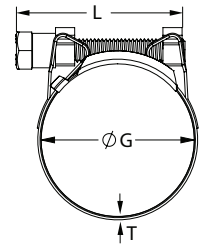
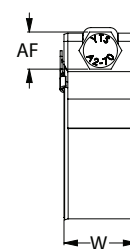
Hose Clamp Range

HOSE CLAMP HTB - H/DUTY T-BOLT W4 (304) STAINLESS / HEC / SOLID BAND

Part	QFind	Width	Thickness	Length of Bolt	Across Flats	Grip Range
		W (mm)	T (mm)	L (mm)	AF (mm)	G (mm)
PHC44HTB19019	HTB100	19	0.3	44.0	8	17–19
PHC44HTB19022	HTB101	19	0.3	44.0	8	20–22
PHC44HTB19025	HTB102	19	0.3	44.0	8	23–25
PHC44HTB19028	HTB103	19	0.6	44.0	8	26–28
PHC44HTB19031	HTB104	19	0.6	54.0	10	29–31
PHC44HTB19035	HTB105	19	0.6	54.0	10	32–35
PHC44HTB19039	HTB106	19	0.6	54.0	10	36–39
PHC44HTB19043	HTB107	19	0.6	54.0	10	40–43
PHC44HTB22047	HTB108	22	0.6	64.0	10	44–47
PHC44HTB22051	HTB109	22	0.6	64.0	10	48–51
PHC44HTB22055	HTB110	22	0.6	64.0	10	52–55
PHC44HTB22059	HTB111	22	0.6	64.0	10	56–59
PHC44HTB22063	HTB112	22	0.6	64.0	10	60–63
PHC44HTB22067	HTB113	22	0.6	64.0	10	64–67
PHC44HTB22073	HTB114	22	0.8	80.0	13	68–73
PHC44HTB22079	HTB115	22	0.8	80.0	13	74–79
PHC44HTB25085	HTB116	25	0.8	80.0	13	80–85
PHC44HTB25091	HTB117	25	0.8	80.0	13	86–91
PHC44HTB25097	HTB118	25	0.8	80.0	13	92–97

Table continued on next page.

304



Disclaimer: while every reasonable effort has been made to ensure that this document is correct at the time of printing, Hobson Engineering®, its agencies and employees disclaim all liability in respect to anything or the consequences of anything done or omitted regarding the whole or any part of this document. HEC product marking is the manufacturing mark of Hobson Engineering. HEC is a registered trademark of Hobson Engineering.

Bolt Tension | Anti-Vibration | Product Reliability | Traceability

hobson.com.au **QUALITY FASTENERS SINCE 1935**

Page 2 of 6



250624DYK

DID YOU KNOW?

about our...



**SPOT
LIGHT**

Hose Clamp Range

HOSE CLAMP HTB - H/DUTY T-BOLT W4 (304) STAINLESS / HEC / SOLID BAND

Part	QFind	Width	Thickness	Length of Bolt	Across Flats	Grip Range
		W (mm)	T (mm)	L (mm)	AF (mm)	G (mm)
PHC44HTB25103	HTB119	25	0.8	80.0	13	98–103
PHC44HTB25112	HTB120	25	0.8	85.0	13	104–112
PHC44HTB25121	HTB121	25	0.8	85.0	13	113–121
PHC44HTB25130	HTB122	25	0.8	85.0	13	122–130

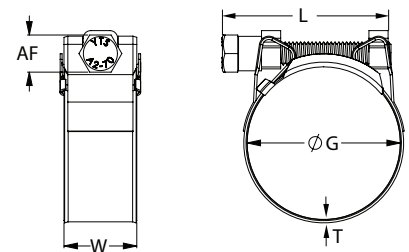


APPLICATIONS

- Designed to handle higher pressures and are typically used in applications that require strong tightening forces for a more secure connection
- Used in high-performance engines
- Heavy-duty
- Automotive
- Industrial hardware
- Machinery
- Agriculture

FEATURES

- W4 (304) stainless steel band, T-bolt, and housing
- More durable than other hose clamps
- 304 T-bolts are designed to handle high torque effortlessly
- Uniform clamping force, smooth inner wall with no perforations, and rounded edges ensure no damage to hoses



Disclaimer: while every reasonable effort has been made to ensure that this document is correct at the time of printing, Hobson Engineering®, its agencies and employees disclaim all liability in respect to anything or the consequences of anything done or omitted regarding the whole or any part of this document. HEC product marking is the manufacturing mark of Hobson Engineering. HEC is a registered trademark of Hobson Engineering.

Bolt Tension | Anti-Vibration | Product Reliability | Traceability

hobson.com.au **QUALITY FASTENERS SINCE 1935**

Page 3 of 6



250624DYK

DID YOU KNOW?

about our...



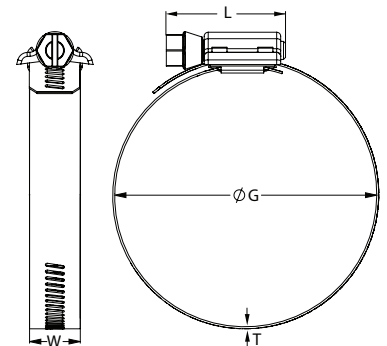
**SPOT
LIGHT**

Hose Clamp Range

HOSE CLAMP PHT - HIGH TORQUE W4 (304) STAINLESS / SAE J1508 / PERFORATED BAND

Part	QFind	Width	Thickness	Length of Bolt	Grip Range
		W (mm)	T (mm)	L (mm)	G (mm)
PHC44PHT13025	PHT100	12.7	0.6	28.0	11–25
PHC44PHT13027	PHT101	12.7	0.6	28.0	14–27
PHC44PHT13032	PHT102	12.7	0.6	28.0	17–32
PHC44PHT13038	PHT103	12.7	0.6	28.0	21–38
PHC44PHT13044	PHT104	12.7	0.6	28.0	21–44
PHC44PHT13051	PHT105	12.7	0.6	28.0	25–51
PHC44PHT13057	PHT106	12.7	0.6	28.0	33–57
PHC44PHT13063	PHT107	12.7	0.6	28.0	38–63
PHC44PHT13082	PHT108	12.7	0.6	28.0	59–83
PHC44PHT13102	PHT109	12.7	0.6	28.0	78–102
PHC44PHT13127	PHT110	12.7	0.6	28.0	103–127
PHC44PHT13152	PHT111	12.7	0.6	28.0	127–152
PHC44PHT13178	PHT112	12.7	0.6	28.0	153–178

304



APPLICATIONS

- Where tight connections are required on hoses and fittings
- Automotive
- Industrial
- Plumbing
- Agriculture
- Marine

FEATURES

- W4 (304) stainless steel band, screw, and housing
- Two-piece housing and robust four-piece lock structure provide a superior tightening torque
- Band is flexible for easy installation and strong tightening
- Material is stamped on the housing
- Clamping range is stamped on the band

Disclaimer: while every reasonable effort has been made to ensure that this document is correct at the time of printing, Hobson Engineering®, its agencies and employees disclaim all liability in respect to anything or the consequences of anything done or omitted regarding the whole or any part of this document. HEC product marking is the manufacturing mark of Hobson Engineering. HEC is a registered trademark of Hobson Engineering.

Bolt Tension | Anti-Vibration | Product Reliability | Traceability

hobson.com.au **QUALITY FASTENERS SINCE 1935**

Page 4 of 6



250624DYK

DID YOU KNOW?

about our...

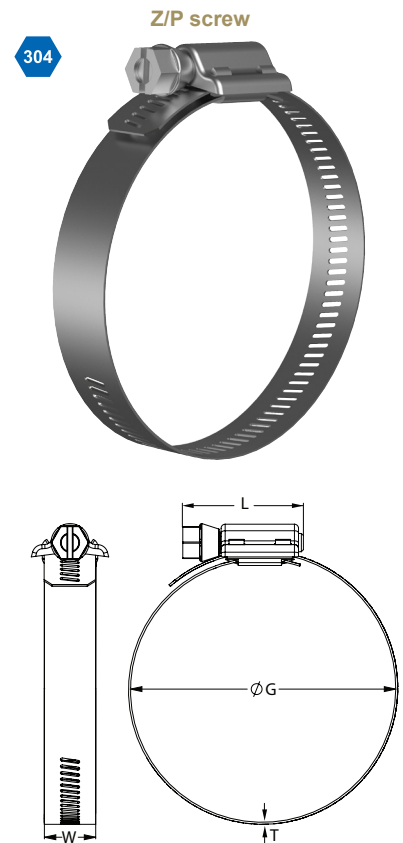


**SPOT
LIGHT**

Hose Clamp Range

HOSE CLAMP PHT - HIGH TORQUE W4 (304) STAINLESS / SAE J1508 / PERFORATED BAND

Part	QFind	Width	Thickness	Length of Bolt	Grip Range
		W (mm)	T (mm)	L (mm)	G (mm)
PHC4ZPHT13025	PHT113	12.7	0.6	28	13–25
PHC4ZPHT13027	PHT114	12.7	0.6	28	14–27
PHC4ZPHT13032	PHT115	12.7	0.6	28	17–32
PHC4ZPHT13038	PHT116	12.7	0.6	28	21–38
PHC4ZPHT13044	PHT117	12.7	0.6	28	21–44
PHC4ZPHT13051	PHT118	12.7	0.6	28	25–51
PHC4ZPHT13057	PHT119	12.7	0.6	28	32–57
PHC4ZPHT13063	PHT120	12.7	0.6	28	40–63
PHC4ZPHT13070	PHT121	12.7	0.6	28	46–70
PHC4ZPHT13076	PHT122	12.7	0.6	28	52–76
PHC4ZPHT13082	PHT123	12.7	0.6	28	59–82
PHC4ZPHT13089	PHT124	12.7	0.6	28	64–89



APPLICATIONS

- Where tight connections are required on hoses and fittings
- Automotive
- Industrial
- Plumbing
- Agriculture

FEATURES

- W4 (304) stainless steel band and housing, and Z/P screw
- Two-piece housing and robust four-piece lock structure provide a superior tightening torque
- Band is flexible for easy installation and strong tightening
- Material is stamped on the housing
- Clamping range is stamped on the band

Disclaimer: while every reasonable effort has been made to ensure that this document is correct at the time of printing, Hobson Engineering®, its agencies and employees disclaim all liability in respect to anything or the consequences of anything done or omitted regarding the whole or any part of this document. HEC product marking is the manufacturing mark of Hobson Engineering. HEC is a registered trademark of Hobson Engineering.

Bolt Tension | Anti-Vibration | Product Reliability | Traceability

hobson.com.au **QUALITY FASTENERS SINCE 1935**

Page 5 of 6



250624DYK

DID YOU KNOW?

about our...



**SPOT
LIGHT**

Hose Clamp Range

HOSE CLAMP PMM - MULTI MINI W4 (304) STAINLESS / SAE J1508 / PERFORATED BAND

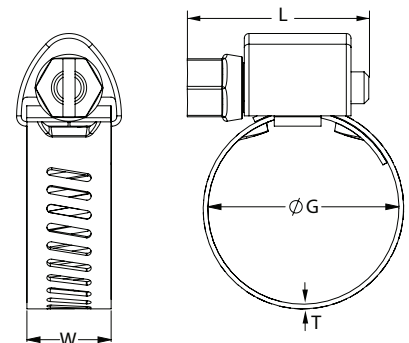
Part	QFind	Width	Thickness	Length of Bolt	Grip Range
		W (mm)	T (mm)	L (mm)	G (mm)
PHC44PMM09016	PMM100	9	0.6	22.5	8–16
PHC44PMM09020	PMM101	9	0.6	22.5	12–20
PHC44PMM09023	PMM102	9	0.6	22.5	12–23

APPLICATIONS

- Best option for small hose applications and narrow areas
- Where tight connections are required on hoses and fittings
- Automotive
- Industrial
- Plumbing
- Agriculture
- Marine

FEATURES

- W4 (304) stainless band, screw, and housing
- Clamping ranges are stamped on the band
- Also called micro gear or worm drive M clamps



Disclaimer: while every reasonable effort has been made to ensure that this document is correct at the time of printing, Hobson Engineering®, its agencies and employees disclaim all liability in respect to anything or the consequences of anything done or omitted regarding the whole or any part of this document. HEC product marking is the manufacturing mark of Hobson Engineering. HEC is a registered trademark of Hobson Engineering.

Bolt Tension | Anti-Vibration | Product Reliability | Traceability

hobson.com.au **QUALITY FASTENERS SINCE 1935**

Page 6 of 6



250624DYK