

DID YOU KNOW?

about our...

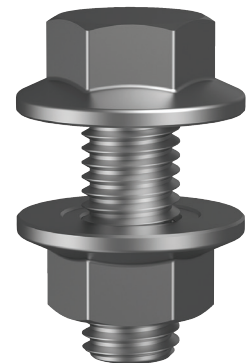


**NEW
PRODUCT**

Purlin Flange Bolt and Nut

PURLIN FLANGE BOLT AND NUT ZINC PLATED (ROHS COMPLIANT) / HEC / CLASS 4.6

Part	QFind	Size	Length	Head Height	Head Diameter	Across Flats
			TL (mm)	H (mm)	D (mm)	AF (mm)
KBFMSZCM120030	BFMSZ1230	M12	30	10.5	28.5	18
KBFMSZCM120055	BFMSZ1255	M12	55	10.5	28.5	18
KBFMSZCM160030	BFMSZ1630	M16	30	13.6	32.6	24
KBFMSZCM160035	BFMSZ1635	M16	35	13.6	32.6	24
KBFMSZCM160045	BFMSZ1645	M16	45	13.6	32.6	24

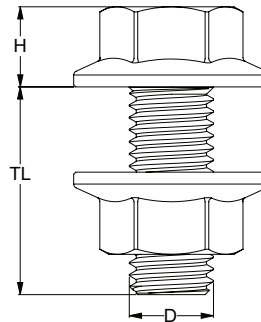


APPLICATIONS

- Fixing purlins and other thin gauge metal components
- Used in roofing and framing in steel construction
- Industrial and commercial warehouses
- Rural and residential sheds and garages

FEATURES

- Flanged components remove the requirement for a washer
- Threaded completely to head to accommodate small grip ranges



Disclaimer: while every reasonable effort has been made to ensure that this document is correct at the time of printing, Hobson Engineering®, its agencies and employees disclaim all liability in respect to anything or the consequences of anything done or omitted regarding the whole or any part of this document. HEC product marking is the manufacturing mark of Hobson Engineering. HEC is a registered trademark of Hobson Engineering.

Bolt Tension | Anti-Vibration | Product Reliability | Traceability

hobson.com.au **QUALITY FASTENERS SINCE 1935**



251007DYK