

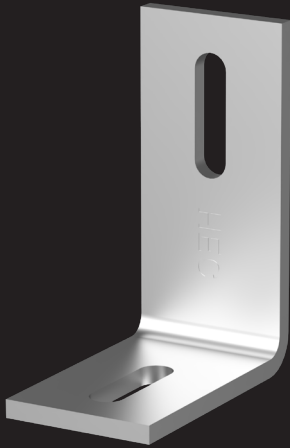
# DID YOU KNOW?

about our...



**SPOT  
LIGHT**

## Tilt Panel Plates Range



PPCMGA~



PPCMGJ~



PPCMGT~



Disclaimer: while every reasonable effort has been made to ensure that this document is correct at the time of printing, Hobson Engineering®, its agencies and employees disclaim all liability in respect to anything or the consequences of anything done or omitted regarding the whole or any part of this document. HEC product marking is the manufacturing mark of Hobson Engineering. HEC is a registered trademark of Hobson Engineering.

Bolt Tension | Anti-Vibration | Product Reliability | Traceability

[hobson.com.au](http://hobson.com.au) **QUALITY FASTENERS SINCE 1935**



Page 1 of 4

251009DYK

# DID YOU KNOW?

about our...



**SPOT  
LIGHT**

## Tilt Panel Angle Joiner Plate

### TILT PANEL ANGLE JOINER PLATE HOT DIP GALVANISED / HOLE SIZE-SUIT M20 2X SLOT HOLE

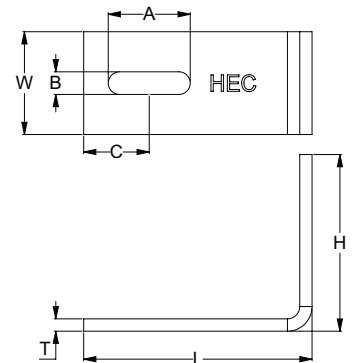
Part	QFind	A	B	C	W	H	L	T
		(mm)	(mm)	(mm)	(mm)	(mm)	(mm)	(mm)
PPCMGA1220150012	PCA11	80	22	64	100	150	220	12

#### APPLICATIONS

- Pre-cast construction
- For right angle corner to panel connections

#### FEATURES

- Two long slotted holes for broad adjustments
- Hot dip galvanised coating



Disclaimer: while every reasonable effort has been made to ensure that this document is correct at the time of printing, Hobson Engineering®, its agencies and employees disclaim all liability in respect to anything or the consequences of anything done or omitted regarding the whole or any part of this document. HEC product marking is the manufacturing mark of Hobson Engineering. HEC is a registered trademark of Hobson Engineering.

Bolt Tension | Anti-Vibration | Product Reliability | Traceability

[hobson.com.au](http://hobson.com.au) **QUALITY FASTENERS SINCE 1935**

Page 2 of 4



251009DYK

# DID YOU KNOW?

about our...



**SPOT  
LIGHT**

## Tilt Panel Flat Joiner Plate

### TILT PANEL FLAT JOINER PLATE HOT DIP GALVANISED / HOLE SIZE-SUIT M20 2X SLOT HOLE

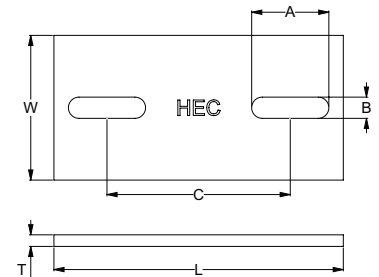
Part	QFind	L	W	T	A	B	C
		(mm)	(mm)	(mm)	(mm)	(mm)	(mm)
PPCMGJ1300150012	PCJ11	300	150	12	80	22	190
PPCMGJ1350100012	PCJ12	350	100	12	80	22	220

#### APPLICATIONS

- Pre-cast concrete panel connections
- For panel-to-panel connections

#### FEATURES

- Also known as stitching plates
- Hot dip galvanised coating



Disclaimer: while every reasonable effort has been made to ensure that this document is correct at the time of printing, Hobson Engineering®, its agencies and employees disclaim all liability in respect to anything or the consequences of anything done or omitted regarding the whole or any part of this document. HEC product marking is the manufacturing mark of Hobson Engineering. HEC is a registered trademark of Hobson Engineering.

Bolt Tension | Anti-Vibration | Product Reliability | Traceability

[hobson.com.au](http://hobson.com.au) **QUALITY FASTENERS SINCE 1935**



Page 3 of 4

251009DYK

# DID YOU KNOW?

about our...



**SPOT  
LIGHT**

## Tilt Panel Clip with Bend

### TILT PANEL CLIP WITH BEND HOT DIP GALVANISED / HOLE SIZE-SUIT M20 1X SLOT HOLE

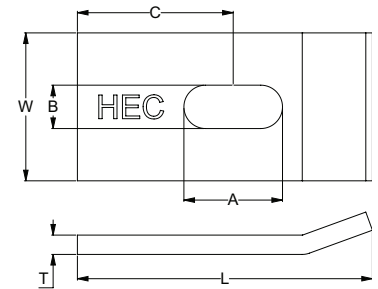
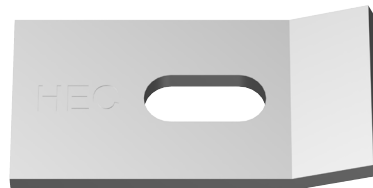
Part	QFind	L	W	T	A	B	C
		(mm)	(mm)	(mm)	(mm)	(mm)	(mm)
PPCMGT1150075010	PCT11	150	75	10	50	22	80

#### APPLICATIONS

- Fixing upright structural steel I-beam columns to concrete tilt panels and concrete dados

#### FEATURES

- Also known as tilt panel cleats brackets



Disclaimer: while every reasonable effort has been made to ensure that this document is correct at the time of printing, Hobson Engineering®, its agencies and employees disclaim all liability in respect to anything or the consequences of anything done or omitted regarding the whole or any part of this document. HEC product marking is the manufacturing mark of Hobson Engineering. HEC is a registered trademark of Hobson Engineering.

Bolt Tension | Anti-Vibration | Product Reliability | Traceability

[hobson.com.au](http://hobson.com.au) **QUALITY FASTENERS SINCE 1935**



Page 4 of 4

251009DYK