

DID YOU KNOW?

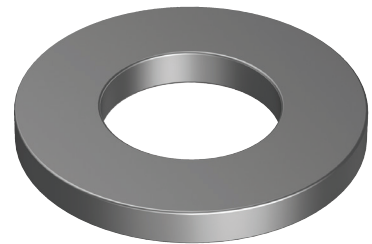
about our...



**NEW
PRODUCT**

Flat Round Sampson™ Washer — Thick

FLAT ROUND SAMPSON™ WASHER — THICK
ZINC PLATED (ROHS COMPLIANT) / HEC / 38–45 HRC



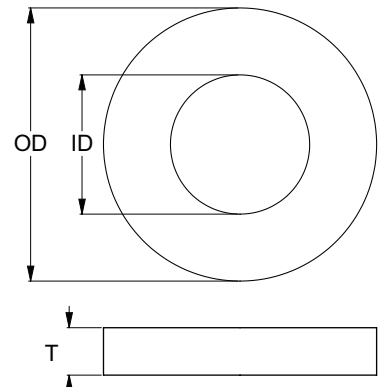
Part	Diameter	Outer Diameter	Inner Diameter	Thickness
		OD (mm)	ID (mm)	T (mm)
WR43ZT037	3/8	27.0	11.0	3.0

APPLICATIONS

- High-tensile bolting
- Industrial equipment
- Heavy vehicles

FEATURES

- Increased thickness for improved load distribution
- Thickness enables better absorption of shocks and vibrations



Disclaimer: while every reasonable effort has been made to ensure that this document is correct at the time of printing, Hobson Engineering®, its agencies and employees disclaim all liability in respect to anything or the consequences of anything done or omitted regarding the whole or any part of this document. HEC product marking is the manufacturing mark of Hobson Engineering. HEC is a registered trademark of Hobson Engineering.

Bolt Tension | Anti-Vibration | Product Reliability | Traceability

hobson.com.au **QUALITY FASTENERS SINCE 1935**

