



PRODUCT DATA

Trilobular Thread Rolling Screw Metal

Torx Drive



Trilobular threading form reduces friction during thread forming, providing deep thread engagement and prevailing torque which exceeds the level of locking screws, and provides resistance to vibrational loosening.

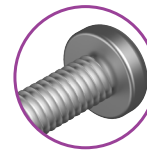
Applications	
• Metal framing	
• Automotive	
• Punched and cast parts	

Material	MS Mild Steel
-----------------	----------------------

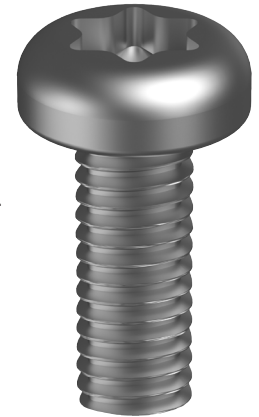
Finish	Z/P Zinc Plated (RoHS Compliant)
---------------	---

Features

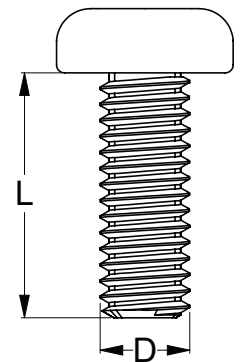
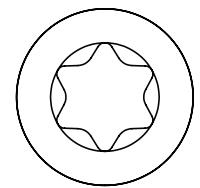
- Thread rolling screws eliminate the cost of tapping, use of washers and nuts, and the use of locking compounds.



Rolled threads compress the grain structure and make the connection stronger.



Part	Size Ø		Torx Size	Recommended Hole Size	
	D (mm)	L (mm)		Steel (mm)	Aluminium (mm)
MTMSZPOM030006	M3	6	T10	2.75	
MTMSZPOM030008	M3	8	T10		
MTMSZPOM030010	M3	10	T10		
MTMSZPOM030012	M3	12	T10		
MTMSZPOM030014	M3	14	T10		
MTMSZPOM040008	M4	8	T20	3.65 - 3.7	3.7
MTMSZPOM040010	M4	10	T20		
MTMSZPOM040012	M4	12	T20		
MTMSZPOM040016	M4	16	T20		
MTMSZPOM040020	M4	20	T20		
MTMSZPOM050010	M5	10	T25	4.6 - 4.65	4.65
MTMSZPOM050012	M5	12	T25		
MTMSZPOM050016	M5	16	T25		
MTMSZPOM050020	M5	20	T25		
MTMSZPOM060010	M6	10	T30		
MTMSZPOM060012	M6	12	T30		
MTMSZPOM060016	M6	16	T30		
MTMSZPOM060020	M6	20	T30		
MTMSZPOM060030	M6	30	T30		



You can download this Test Certificate and/or Report from our website: hobson.com.au

Disclaimer: While every reasonable effort has been made to ensure that this document is correct at the time of printing, Hobson Engineering®, its agencies and employees, disclaim any and all liability to any person in respect of anything or the consequences of anything done or omitted to be done in reliance upon the whole or any part of this document.

Bolt Tension | Anti-Vibration | Product Reliability | Traceability

hobson.com.au **QUALITY FASTENERS SINCE 1935**

