



USER GUIDE

Steel Frame Hex Bolt

Description

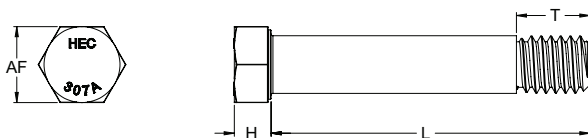
Steel frame bolts are used in engineered and designed fabricated steel floor and truss systems, including top and bottom chords and brace connections.

| Applications | |
|---|--|
| <ul style="list-style-type: none"> Commercial steel frames | |

| | |
|-----------------|--|
| Material |  MS Mild Steel |
|-----------------|--|

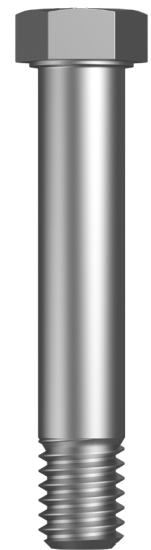
| | |
|---------------|--|
| Finish |  Zinc Plated (RoHS Compliant) |
|---------------|--|

Dimensions



Features

- Short thread length for better fit and alignment of steel sections
- Bolts sold separately as system requirements maybe different. Couplers, NYLOC® nuts, hex nuts, and spacers are also available



| Part | Diameter | Length | Thread Length | Head Height | Across Flats |
|----------------|----------|--------|---------------|-------------|--------------|
| | | L (mm) | T (mm) | H (mm) | AF (in) |
| BHMSZ11C037200 | 3/8 | 50 | 10 | 6 | 1/2 |

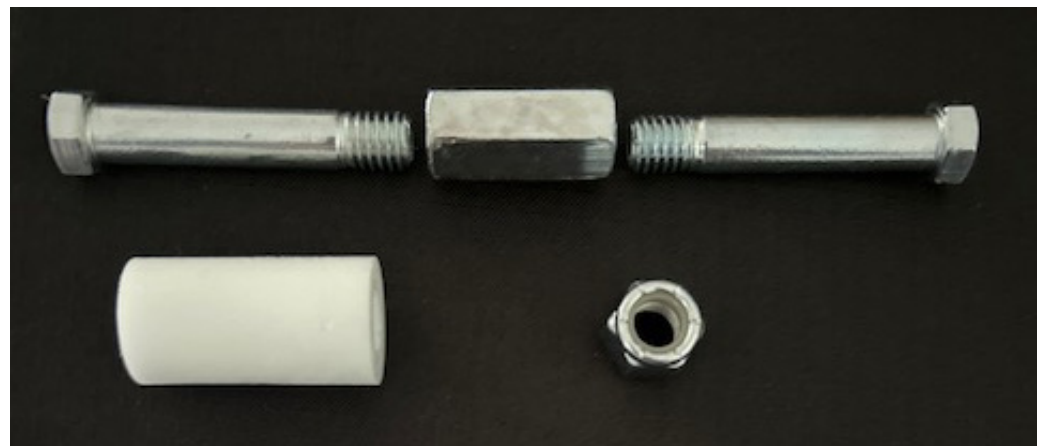
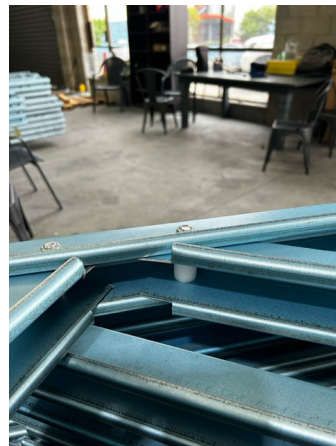
Disclaimer: while every reasonable effort has been made to ensure that this document is correct at the time of printing, Hobson Engineering®, its agencies and employees disclaim all liability in respect to anything or the consequences of anything done or omitted regarding the whole or any part of this document. HEC product marking is the manufacturing mark of Hobson Engineering. HEC is a registered trademark of Hobson Engineering.



USER GUIDE

Steel Frame Hex Bolt

Application Example



Disclaimer: while every reasonable effort has been made to ensure that this document is correct at the time of printing, Hobson Engineering®, its agencies and employees disclaim all liability in respect to anything or the consequences of anything done or omitted regarding the whole or any part of this document. HEC product marking is the manufacturing mark of Hobson Engineering. HEC is a registered trademark of Hobson Engineering.

Bolt Tension | Anti-Vibration | Product Reliability | Traceability

hobson.com.au **QUALITY FASTENERS SINCE 1935**



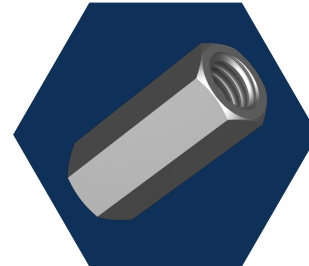


USER GUIDE

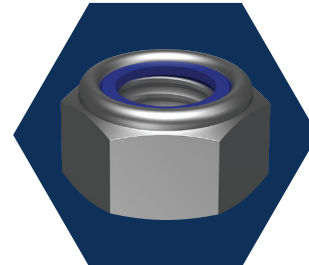
Steel Frame Hex Bolt

Recommended For Use With:

| HEX COUPLER ZINC PLATED (RoHS Compliant) / HEC | | |
|---|----------|----------------|
| Part | Diameter | Length (mm) |
| AXHCMSZW037 | 3/8 | 30 |



| NYLOC® HEX NUT ZINC PLATED (RoHS Compliant) / IFI-100NE / GRADE 2 | |
|--|----------|
| Part | Diameter |
| NNG2ZC037 | 3/8 |



| ROUND SPACER NYLON NATURAL / HEC / NYLON | | |
|---|----------|----------------|
| Part | Diameter | Length (mm) |
| SR66P100210375 | 10.0 | 21 x 37.5 |



Disclaimer: while every reasonable effort has been made to ensure that this document is correct at the time of printing, Hobson Engineering®, its agencies and employees disclaim all liability in respect to anything or the consequences of anything done or omitted regarding the whole or any part of this document. HEC product marking is the manufacturing mark of Hobson Engineering. HEC is a registered trademark of Hobson Engineering.

Bolt Tension | Anti-Vibration | Product Reliability | Traceability

hobson.com.au **QUALITY FASTENERS SINCE 1935**



251201GD