

CONSTRUCT PRO



# PUMA X™

## PANEL BRACE ANCHOR



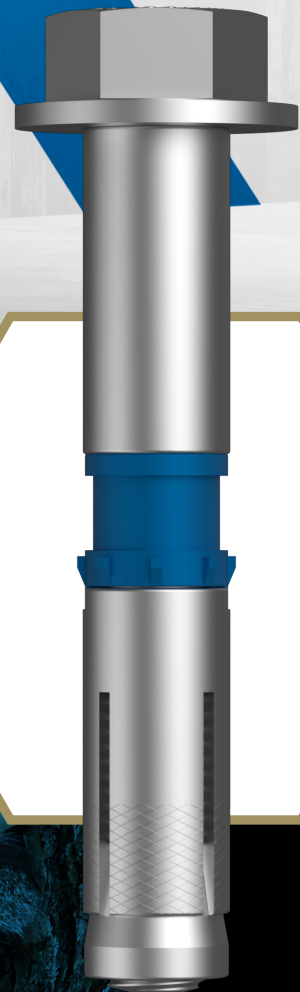
TORQUE-CONTROLLED



COMPRESSION RING



EXPANSION SLEEVE



ZINC PLATED / AS 3850.1

# PRODUCT RELEASE

MAP88ZDM140115

[hobson.com.au](http://hobson.com.au)

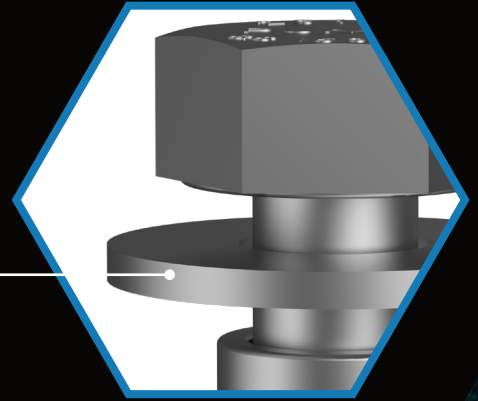


# PUMAX™

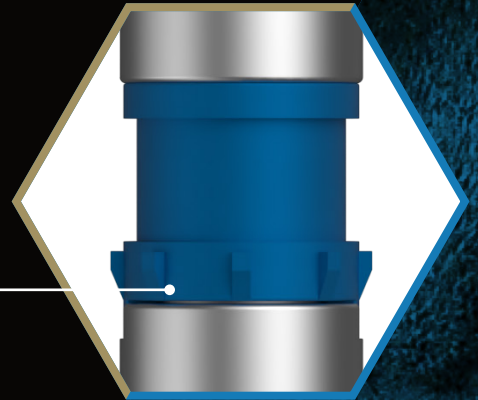
## PANEL BRACE ANCHOR



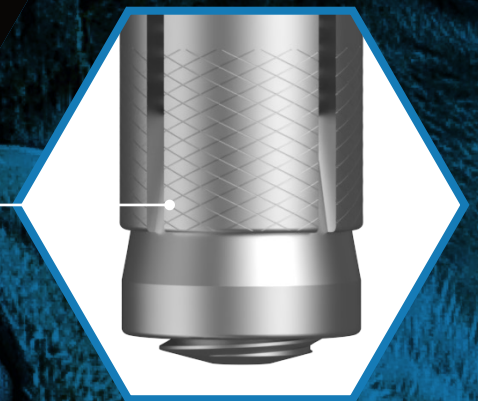
**LARGE BOLT HEAD +  
HEAVY-DUTY WASHER**



**COMPRESSION  
RING FOR IMPROVED  
FIXTURE CLAMPING**



**TORQUE-CONTROLLED  
EXPANSION ANCHOR**





# PRODUCT DATA

ZINC PLATED / HEC / AS 3850.1

# PUMA-X™

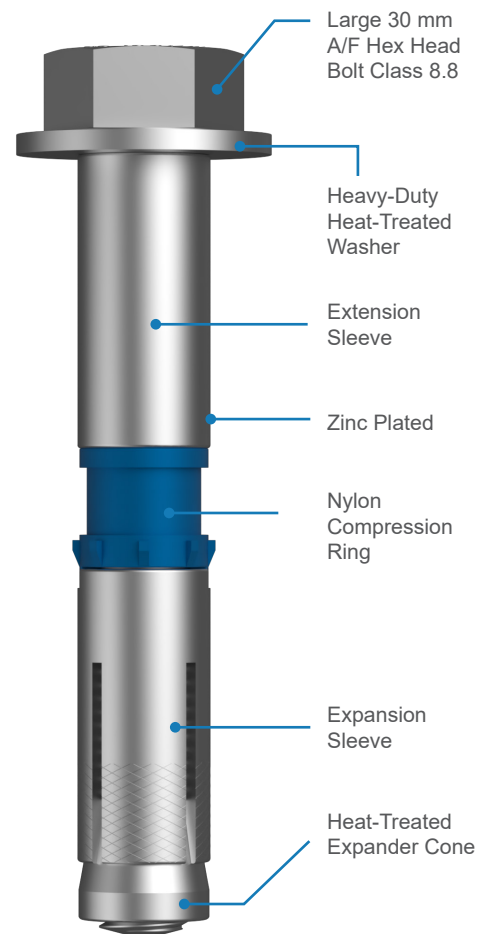
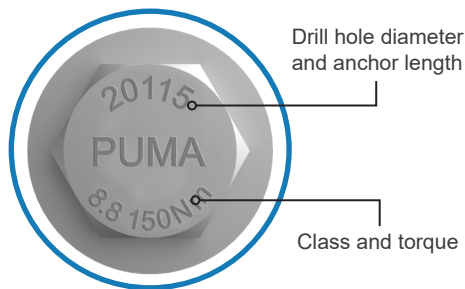
## Panel Brace Anchor

The Hobson **Puma-X™** Panel Brace Anchor independent testing tension and shear results provide real-world application results that can be relied upon for design by engineers.

Melbourne Testing Services NATA accreditation no.1047 includes scope of accreditation for breaking load, proof load, and pull-out resistance for **AS 3850.1:2024** Appendix A.

### Markings

For **Puma-X™** anchor size M14



### Applications

- Tilt panel bracing

**Material** **ISO Property Class 8.8**

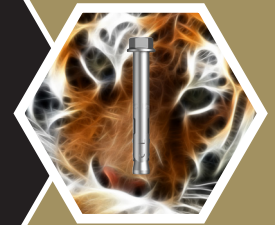
**Finish** **Zinc Plated**

Part	QFind	Size and Length	Embedment Depth	Fixture Hole	Fixture Thickness	Installation Torque	Wrench Size
			mm	mm	mm	Nm	mm
<b>MAP88ZDM140115</b>	<b>MAP115</b>	M14 x 115	95	21-26	20	150	30

Bolt Tension | Anti-Vibration | Product Reliability | Traceability

[hobson.com.au](http://hobson.com.au) **QUALITY FASTENERS SINCE 1935**





# PRODUCT DATA

ZINC PLATED / HEC / AS 3850.1

▶ Testing was conducted to AS 3850.1:2024 Appendix A and simulated real-world conditions.

Testing criteria assesses performance for: Static tension | Shear | Cyclic | Installation torque

Min. concrete thickness	Min. Edge Distance	Min. Anchor Spacing	Drill Hole	Drill Hole Depth
mm	mm	mm	mm	mm
150*	300	240	20	110

\* minimum slab thickness can be reduced to 125mm for slab on ground provided drilling breakthrough is permitted.

Steel Decisive

	Concrete Strength	Perpendicular Edge Distance ≥350mm		Perpendicular Edge Distance =300mm	
		Characteristic Ultimate Strength	Working Load Limit	Characteristic Ultimate Strength	Working Load Limit
		kN	kN	kN	kN
Tension	C20/25	38.6	17.1	38.6	17.1
Shear		98.2	43.7	84.7	37.6

Contact Hobson's Engineering team for further information on how to interpret and use testing results in your application design as well as inspection guidelines as specified in AS 3850.2:2024.

## Combined Tension and Shear as per A9.6.3 AS 3850.1:2015

$$[N_s / (R_{u,N} / F)]^{1.5} + [V_s / (R_{u,V} / F)]^{1.5} \leq 1.0$$

$R_{u,N}$  = Characteristic ultimate tensile strength

$R_{u,V}$  = Characteristic ultimate shear strength

$N_s$  = Tension component of the unfactored applied load

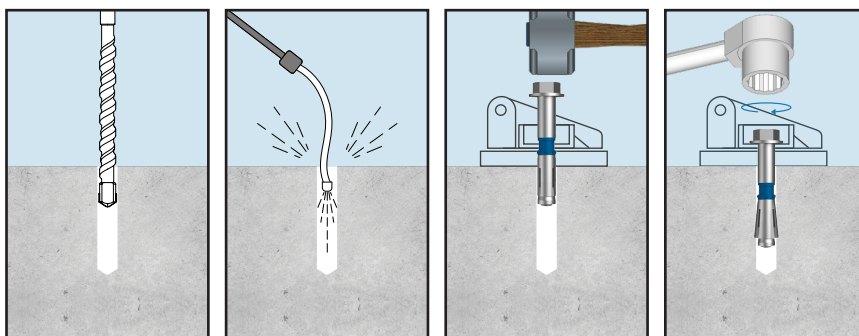
$V_s$  = Shear component of the unfactored applied load

F = Factor of Safety = 2.25 (According to Table 2.1 of AS 3850.1:2015)

Note: if the applied load, or a component of it, is a wind load calculated from AS/NZS 1170.2 or AS/NZS 1170.0, it should be divided by 1.5 before being placed in this formula (see Clause 2.5.6 of AS 3850.2:2015).

**The Hobson Puma-X™ Panel Brace Anchor has been tested by an independent NATA-accredited testing laboratory to ensure reliable safety and performance.**

## Installation:



### Instructions

1. Drill hole to correct embedment depth.
2. Blow hole to remove dust and debris.
3. Insert the anchor so that the bolt head and washer are firmly seated against the brace foot.
4. Using a calibrated torque wrench, tighten the anchor to the required torque.

Disclaimer: while every reasonable effort has been made to ensure that this document is correct at the time of printing, Hobson Engineering®, its agencies and employees disclaim all liability in respects to anything or the consequences of anything done or omitted regarding the whole or any part of this document. HEC product marking is the manufacturing mark of Hobson Engineering. HEC is a registered trademark of Hobson Engineering.

Bolt Tension | Anti-Vibration | Product Reliability | Traceability

[hobson.com.au](http://hobson.com.au) **QUALITY FASTENERS SINCE 1935**



2504-111PR