



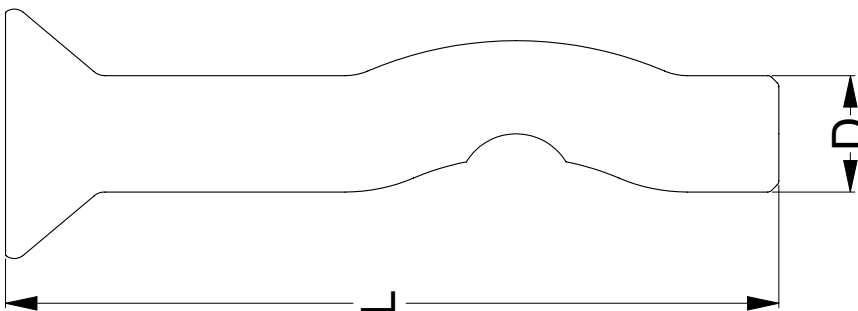
Product Data Sheet

H-IT™ COUNTERSUNK ANCHOR

Material: AISI 1040 Carbon Steel
Finish: Mechanical Galvanised. Galvanised Coating thickness 5.0µm (min.) Suitable for tamper proof applications.
Application: Mechanical anchor for fast and easy installation in concrete, solid brick or stone and core filled block.



Part	QFind	Size	Length	Pack
		D (mm)	L (mm)	Qty
MHAHTMCM050065	MHA108	5.0	65	100
MHAHTMCM050075	MHA109	5.0	75	100
MHAHTMCM050100	MHA110	5.0	100	100
MHAHTMCM065038	MHA111	6.5	38	100
MHAHTMCM065050	MHA112	6.5	50	100
MHAHTMCM065065	MHA113	6.5	65	100
MHAHTMCM065075	MHA114	6.5	75	100
MHAHTMCM065100	MHA115	6.5	100	100





Product Data Sheet

H-IT™ COUNTERSUNK ANCHOR

Installation Specifications

Part	Min. Embedment Depth	Max. Fixture Thickness	Drill Diameter	Head Diameter	Head Height	Min. Spacing	Min. Edge Distance
	(mm)	(mm)	(mm)	(mm)	(mm)	(mm)	(mm)
MHAHTMCM050065	20	32	5.0	11	3.5	50	60
MHAHTMCM050075	25	41	5.0	11	3.5	50	60
MHAHTMCM050100	30	65	5.0	11	3.5	50	60
MHAHTMCM065038	25	6	6.5	12	4.0	65	78
MHAHTMCM065050	25	16	6.5	12	4.0	65	78
MHAHTMCM065065	25	32	6.5	12	4.0	65	78
MHAHTMCM065075	30	41	6.5	12	4.0	65	78
MHAHTMCM065100	30	65	6.5	12	4.0	65	78

Load Performance

		Load in Tension(kN)			Load in Shear(kN)		
Anchor Diameter	Embedment Depth	Concrete Compressive Strength			Concrete Compressive Strength		
(mm)	(mm)	25MPa	32MPa	40MPa	25MPa	32MPa	40MPa
Ø5	22	0.9	1.0	1.0	1.5	1.6	1.6
	25	1.0	1.1	1.1	2.1	2.2	2.2
	32	1.2	1.5	1.7	2.8	3.1	3.2
Ø6.5	22	1.0	1.1	1.2	2.6	2.8	2.9
	25	1.2	1.3	1.4	2.9	3.1	3.2
	32	1.5	2.0	2.1	3.2	3.7	3.9

Installation Diagram

