



Product Data Sheet

H-IT™ MUSHROOM ANCHOR

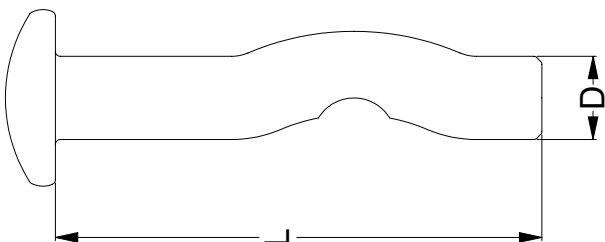
Material: AISI 1040 Carbon Steel

Finish: Mechanical Galvanised.
Galvanised Coating thickness 4.0µm (min.)
Suitable for tamper proof applications.

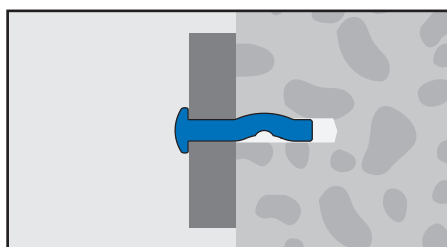
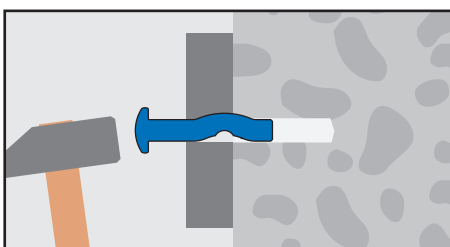
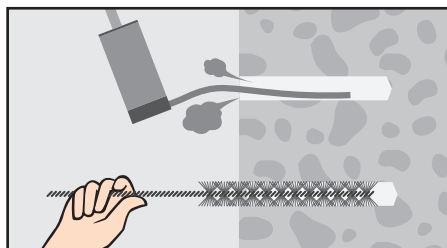
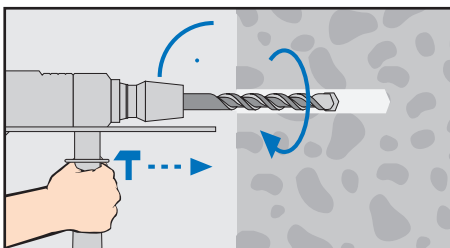
Application: Mechanical anchor for fast and easy installation in concrete, solid brick or stone and core filled block.



Part	QFind	Size		Length		Pack
		D (mm)	L (mm)	L (mm)	Qty	
MHAHTMMM050025	MHA116	5.0	25			100
MHAHTMMM050032	MHA117	5.0	32			100
MHAHTMMM050038	MHA118	5.0	38			100
MHAHTMMM050050	MHA119	5.0	50			100
MHAHTMMM065025	MHA120	6.5	25			100
MHAHTMMM065038	MHA121	6.5	38			100
MHAHTMMM065050	MHA122	6.5	50			100
MHAHTMMM065063	MHA123	6.5	63			100
MHAHTMMM065075	MHA124	6.5	75			100
MHAHTMMM0650100	MHA125	6.5	100			100



Installation Diagram





Product Data Sheet

H-IT™ MUSHROOM ANCHOR

Installation Specifications

Part	Min. Embedment depth	Max. Fixture thickness	Drill Diameter	Head Diameter	Head Height	Min. Spacing	Min. Edge Distance
	(mm)	(mm)	(mm)	(mm)	(mm)	(mm)	(mm)
MHAHTMMM050025	20	3	5.0	11	3.0	50	60
MHAHTMMM050032	20	6	5.0	11	3.0	50	60
MHAHTMMM050038	20	10	5.0	11	3.0	50	60
MHAHTMMM050050	20	18	5.0	11	3.0	50	60
MHAHTMMM065025	25	2	6.5	12	3.2	65	78
MHAHTMMM065038	25	6	6.5	12	3.2	65	78
MHAHTMMM065050	25	18	6.5	12	3.2	65	78
MHAHTMMM065063	25	30	6.5	12	3.2	65	78
MHAHTMMM065075	30	42	6.5	12	3.2	65	78
MHAHTMMM0650100	30	65	6.5	12	3.2	65	78

Load Performance

		Load in Tension(kN)			Load in Shear(kN)		
Anchor Diameter	Embedment Depth	Concrete Compressive Strength			Concrete Compressive Strength		
(mm)	(mm)	25MPa	32MPa	40MPa	25MPa	32MPa	40MPa
Ø5	22	0.9	1.0	1.0	1.5	1.6	1.6
	25	1.0	1.1	1.1	2.1	2.2	2.2
	32	1.2	1.5	1.7	2.8	3.1	3.2
Ø6.5	22	1.0	1.1	1.2	2.6	2.8	2.9
	25	1.2	1.3	1.4	2.9	3.1	3.2
	32	1.5	2.0	2.1	3.2	3.7	3.9

