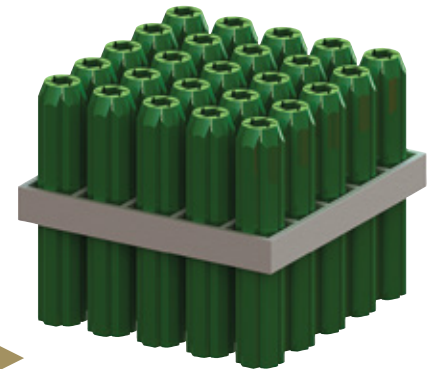


PRODUCT DATA

PVC Wall Plugs

A traditional wall plug that uses colour coding to match the required screw gauges. Light duty anchor that can be installed using self-tapping, wood screws or coach screws.

| Applications | Trades | Base Material |
|---|---|--|
| <ul style="list-style-type: none"> Electrical fittings Pipe saddles Lighting fixtures Signage Brackets Handrails Through fixing of timber frames | <ul style="list-style-type: none"> Plumbers Electricians Builders Mechanical services | <ul style="list-style-type: none"> Concrete Stone Brick |

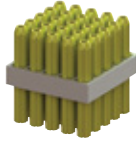




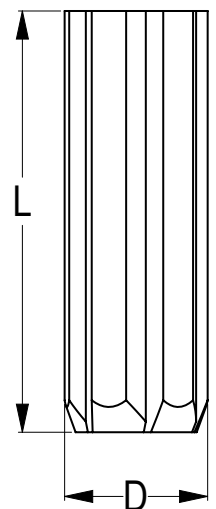
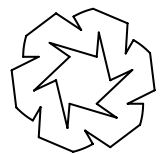
Features

- Tapered point for easy fitting into pre-drilled holes.
- Expansion along the full length of the plug.

| | |
|-----------------|--|
| Material |  Nylon PVC |
|-----------------|--|

| | |
|---------------|---|
| Finish |  Nylon PVC |
|---------------|---|

| Part | QFind | Dia Ø | Length | Screw Gauge (G) | Pcs | Pack Qty |
|----------|--------|--------|--------|-----------------------------|--|----------|
| | | D (mm) | L (mm) | *Equivalent (mm) | 25 per frame | |
| MWPFY-25 | MWP121 | 4 | 25 | 1-2-3G *(1.78 - 2.52 mm) |  | 1000 |
| MWPFW-25 | MWP119 | 5 | 25 | 4-5-6G *(2.48 - 3.50 mm) |  | 1000 |
| MWPFW-35 | MWP120 | | 35 | | | |
| MWPF-25 | MWP114 | 6 | 25 | 8-9G *(4.20 - 4.50 mm) |  | 1000 |
| MWPF-30 | MWP115 | | 30 | | | |
| MWPF-35 | MWP116 | | 35 | | | |
| MWPF-38 | MWP117 | | 38 | | | |
| MWPF-50 | MWP118 | | 50 | | | |



Disclaimer: While every reasonable effort has been made to ensure that this document is correct at the time of printing, Hobson Engineering, its agencies and employees, disclaim any and all liability to any person in respect of anything or the consequences of anything done or omitted to be done in reliance upon the whole or any part of this document.

Bolt Tension | Anti-Vibration | Product Reliability | Traceability

hobson.com.au **QUALITY FASTENERS SINCE 1935**

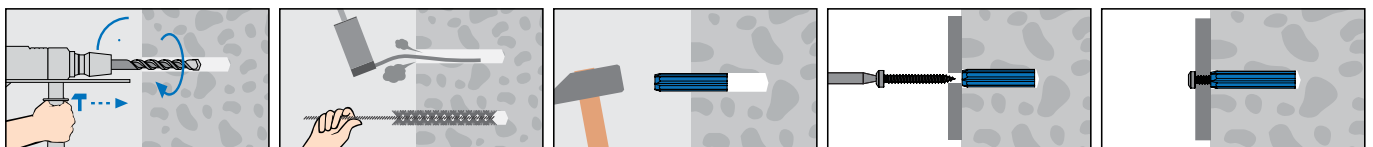


PRODUCT DATA

PVC Wall Plugs

| Part | QFind | Dia Ø | Length | Screw Gauge (G) | Pcs | Pack Qty |
|-----------|--------|--------|--------|-------------------------------|--|----------|
| | | D (mm) | L (mm) | *Equivalent (mm) | | |
| MWPFPG-25 | MWP106 | 6.5 | 25 | 10 - 12G *(4.80 - 5.50 mm) |  | 1000 |
| MWPFPG-30 | MWP107 | | 30 | | | 1000 |
| MWPFPG-35 | MWP108 | | 35 | | | 500 |
| MWPFPG-38 | MWP109 | | 38 | | | 500 |
| MWPFPG-50 | MWP110 | | 50 | | | 500 |
| MWPFB-25 | MWP100 | 8 | 25 | 14 - 16G *(6.30 - 6.80 mm) |  | 1000 |
| MWPFB-35 | MWP101 | | 35 | | | 500 |
| MWPFB-50 | MWP102 | | 50 | | | 500 |
| MWPF0-35 | MWP111 | 10 | 35 | 16 - 18G *(6.80 - 7.50 mm) |  | 500 |
| MWPF0-50 | MWP112 | | 50 | | | 500 |
| MWPF0-60 | MWP113 | | 60 | | | 500 |
| MWPF0-50 | MWP103 | 12 | 50 | 20 - 24G *(8.13 - 9.40 mm) |  | 500 |
| MWPF0-60 | MWP104 | | 60 | | | 500 |
| MWPF0-75 | MWP105 | | 75 | | | 250 |

Installation



Disclaimer: While every reasonable effort has been made to ensure that this document is correct at the time of printing, Hobson Engineering, its agencies and employees, disclaim any and all liability to any person in respect of anything or the consequences of anything done or omitted to be done in reliance upon the whole or any part of this document.

Bolt Tension | Anti-Vibration | Product Reliability | Traceability

hobson.com.au **QUALITY FASTENERS SINCE 1935**