



PRODUCT DATA

Tie Wire Suspension Anchor

A pre-assembled one piece tie wire anchor for the purpose of suspending ceilings, attaching cable ties and support conduit.

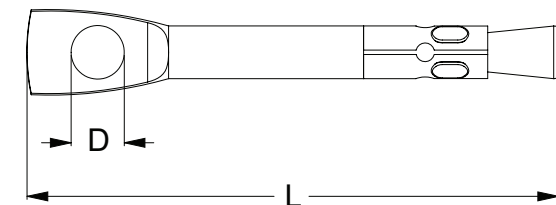
Applications
<ul style="list-style-type: none"> • Concrete • Concrete Block

Zinc Yellow Passivate

Material	Carbon Steel
----------	--------------

Finish	Zinc Yellow Passivate
--------	-----------------------

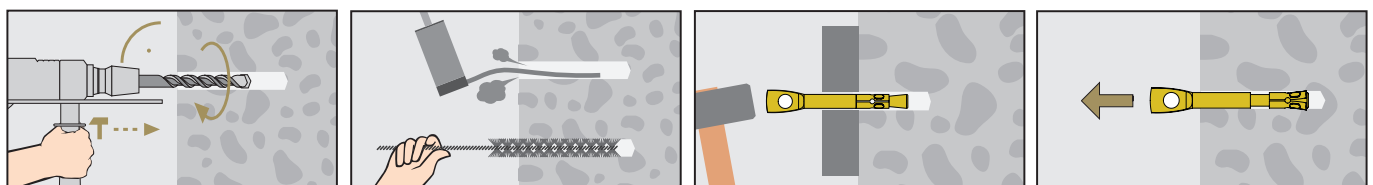
Part	QFIND	Size	Length	Drill Hole Ø	Min. Drill Depth	Eye Diameter Ø	Pack Qty
			L (mm)	(mm)	(mm)	D (mm)	
MSTMSYM060060	MST100	M6	60	6	45	6	100



Part	Concrete Strength	Embedment Depth	Min. spacing	Min. edge distance	Working Load In Tension ¹
	(MPa)	(mm)	(mm)	(mm)	(kN)
MSTMSYM060060	32	30	90	45	0.65

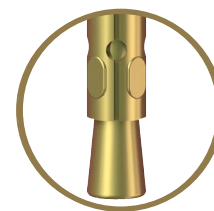
1. Working load is the governing minimum allowable load obtained by comparing relevant concrete and steel working loads. Factor of Safety (FOS=2.5 for steel and FOS=3.0 for concrete) are already included.

Installation



Disclaimer: While every reasonable effort has been made to ensure that this document is correct at the time of printing, Hobson Engineering, its agencies and employees, disclaim any and all liability to any person in respect of anything or the consequences of anything done or omitted to be done in reliance upon the whole or any part of this document.

Expansion Clip



Features

- Hole diameter equals body diameter required
- Gripping lugs on the expansion clip allow maximum setting capacity during the installation process

Installation Guides

As per the images shown. After the anchor has been inserted into position, pull on the anchor with a claw hammer to complete the installation.