

PRODUCT DATA

BDX Metal Cyclone — Multiseal

Applications	
<ul style="list-style-type: none"> • Wall cladding • Metal to metal fixing • Metal roofing & wall cladding • Crest fixing 	

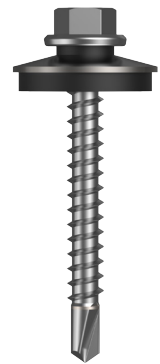
Material	C1022 Hardened
-----------------	----------------

Finish	X9 Coating
---------------	------------

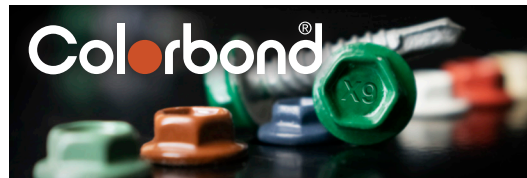
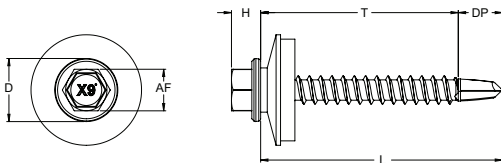
BDX[®]

14 Gauge Hex Head

X9 ProteXion coating is suitable for ISO 9223 Category 4 environments.



Dimensions



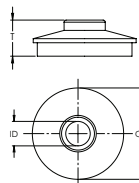
Refer to our documents online for a complete list of available Colorbond[®] colours.

hobson.com.au

Part	QFind	Gauge	TPI	Length	Thread Length	Drill Point Length	Head Height	Head ø	Drive Size
				L (mm)	T (mm)	DP (mm)	H (mm)	D (mm)	AF (inch)
T9PM9YE1410055	QC02	14	10	55	45	10	6.5	15	HEX 3/8
T9PM9YE1410065	QC03	14	10	65	55	10	6.5	15	HEX 3/8
T9PM9YE1410075	QC04	14	10	75	65	10	6.5	15	HEX 3/8
T9PM9YE1410095	QC05	14	10	95	85	10	6.5	15	HEX 3/8

Washer Dimensions

Outer Diameter	Inner Diameter	Thickness
OD (mm)	ID (mm)	T (mm)
25	6.5	11



Disclaimer: while every reasonable effort has been made to ensure that this document is correct at the time of printing, Hobson Engineering[®], its agencies and employees disclaim all liability in respect to anything or the consequences of anything done or omitted regarding the whole or any part of this document. HEC product marking is the manufacturing mark of Hobson Engineering. HEC is a registered trademark of Hobson Engineering.

Bolt Tension | Anti-Vibration | Product Reliability | Traceability

hobson.com.au **QUALITY FASTENERS SINCE 1935**



PRODUCT DATA

BDX Metal Cyclone — Multiseal

Pullout Values

Plate (Purlin)	Metal Plate Thickness	¹ Mean Load	² Characteristic Load	³ Working Load
	(mm)	(N)	(N)	(N)
G2	0.8	1100	900	350
G2	1.2	2050	1750	700
G550	1.6	4750	4300	1700
G450	2.0	6300	6000	2400
G450	2.5	8000	7350	2950
G2	3.0	8150	7450	3000

Mechanical Properties

Torsional Strength	¹ Mean Tensile Strength	¹ Mean Shear Strength	² Characteristic Tensile Strength	² Characteristic Shear Strength
(Nm)	(N)	(N)	(N)	(N)
14.1	21200	12700	20850	12500

Drill Point Test

Plate (Purlin)	Metal Plate Thickness	Load	Drill Speed	Drill Time	Drill Time
	(mm)	(kg)	(RPM)	(Max. individual) Seconds	(Max. average) Seconds
G450	2.0	18	2200	6	5

Disclaimer: while every reasonable effort has been made to ensure that this document is correct at the time of printing, Hobson Engineering®, its agencies and employees disclaim all liability in respect to anything or the consequences of anything done or omitted regarding the whole or any part of this document. HEC product marking is the manufacturing mark of Hobson Engineering. HEC is a registered trademark of Hobson Engineering.

Bolt Tension | Anti-Vibration | Product Reliability | Traceability

hobson.com.au **QUALITY FASTENERS SINCE 1935**

PRODUCT DATA

BDX Metal Cyclone — Multiseal

Installation

1. Use a cordless screw gun set between 2,200–3,000 RPM. Fit the Hex Drive Bit over the screw and place at the fastening position.
2. Apply consistently firm pressure to the screw driver while the screw is drilling.
3. Care should be taken not to over-tighten the screw.

*Installation with impact drivers not recommended.

Recommended for use with:

MAGNETIC NUT SETTER S2 ALLOY STEEL / STANDARD DRIVE BIT 1/4		
Part	QFind	Length (mm)
TXDDPNSS37045	B030	45
TXDDPNSS37065	B055	65



Recommended
HEX 3/8 Magnetic
Nut Setter

SPRING NUT SETTER S2 ALLOY STEEL BLACK / impaX DRIVE BIT 1/4		
Part	QFind	Length (mm)
TXDIPSS37065	BA50	50
TXDIPSS37150	BA51	75



Recommended
HEX 3/8 Spring
Nut Setter

MAGNETIC NUT SETTER S2 ALLOY STEEL BLACK / impaX DRIVE BIT 1/4		
Part	QFind	Length (mm)
TXDIPNSS37045	BA22	45
TXDIPNSS37065	B095	65
TXDIPNSS37150	BA23	150



Recommended
HEX 3/8 Magnetic
Nut Setter

Disclaimer: while every reasonable effort has been made to ensure that this document is correct at the time of printing, Hobson Engineering®, its agencies and employees disclaim all liability in respect to anything or the consequences of anything done or omitted regarding the whole or any part of this document. HEC product marking is the manufacturing mark of Hobson Engineering. HEC is a registered trademark of Hobson Engineering.

Bolt Tension | Anti-Vibration | Product Reliability | Traceability

hobson.com.au **QUALITY FASTENERS SINCE 1935**