




PRODUCT DATA

Metal SDS Flanged Hex Head and Seal

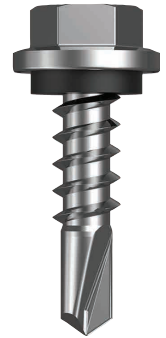
Self Drilling Screw (SDS) #14-10

Applications	
<ul style="list-style-type: none"> • Metal to metal fixing • Wall cladding • Valley fixing • Pergolas 	

Material	 C1022 Hardened
-----------------	--

Finish	 Class 4
---------------	--

14 Gauge Head Hex and Seal



Pullout Values				
Plate (Purlin)	Metal Plate Thickness	¹ Mean Load	² Characteristic Load	³ Working Load
	(mm)	(N)	(N)	(N)
G2	0.8	1100	900	350
G2	1.2	2050	1750	700
G550	1.6	4750	4300	1700
G450	2.0	6300	6000	2400
G450	2.5	8000	7350	2950
G2	3.0	8150	7450	3000

Drill Point Test					
Plate (Purlin)	Metal Plate Thickness	Load	Drill Speed	Drill Time	Drill Time
	(mm)	(kg)	(RPM)	(Max. individual Seconds)	(Max. average Seconds)
G450	2.5	24	2200	4	3

Mechanical Properties				
Torsional Strength	¹ Mean Tensile Strength	¹ Mean Shear Strength	² Characteristic Tensile Strength	² Characteristic Shear Strength
(Nm)	(N)	(N)	(N)	(N)
14.1	21200	12700	20850	12500

Note: 1000N = 1kN

¹ Mean Load/Strength is the average ultimate strength of samples tested.

² Characteristic Load/Strength: 95% of these screws are expected to have a strength greater than the loads shown.

³ Working Load is the governing minimum allowable load obtained by comparing relevant concrete and steel working loads. Factor of Safety (FOS)=2.5 for steel, FOS=2.5 for timber and FOS=3.0 for concrete) are already included.

All values are obtained under laboratory conditions using DRILLX product. Safety factors should be considered for design purposes. Actual pullout loads may differ slightly depending on certain properties of the base material.

Disclaimer: While every reasonable effort has been made to ensure that this document is correct at the time of printing, Hobson Engineering®, its agencies and employees, disclaim any and all liability to any person in respect of anything or the consequences of anything done or omitted to be done in reliance upon the whole or any part of this document.



Bolt Tension | Anti-Vibration | Product Reliability | Traceability

hobson.com.au **QUALITY FASTENERS SINCE 1935**

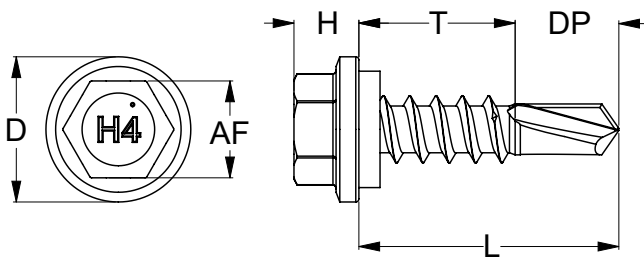




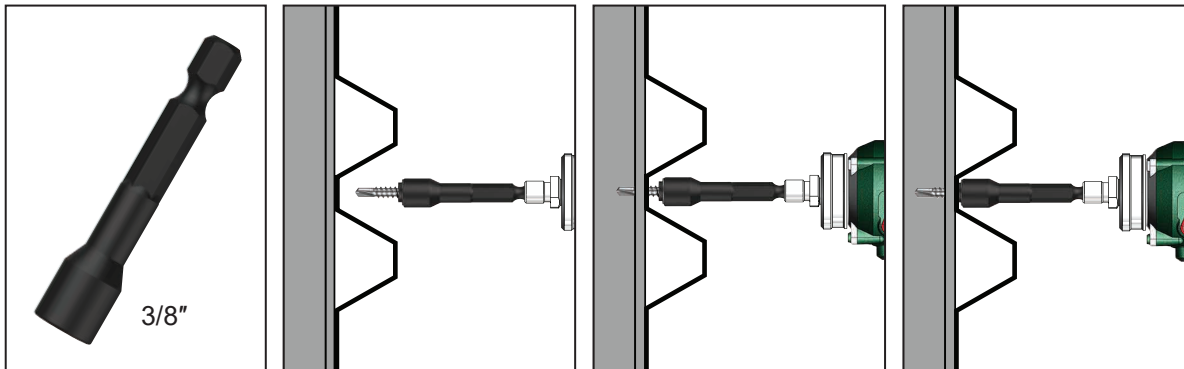
PRODUCT DATA

Metal SDS Flanged Hex Head and Seal

Part	QFind	Gauge	TPI	Length	Thread Length	Drill Point Length	Head Height	Head ø	Drive Size	Pack Qty
				L (mm)	T (mm)	DP (mm)	H (mm)	D (mm)	AF (inch)	
T9PM4SH1410025	Q327	14	10	25	15	10.0	6.5	15	HEX 3/8"	1000
T9PM4SH1410042	Q330			42	32					1000



Installation



Recommended HEX 3/8 inch Drive Bits:

Part	QFind	Size (mm)
TXDIPNSS37045	BA22	45
TXDIPNSS37065	B095	65
TXDIPNSS37150	BA23	150

Installation Guide

1. Use a cordless screw driver set between 2,200-3,000 RPM. Fit the HEX Drive Bit over the screw and place at the fastening position.
2. Apply consistently firm pressure to the screw driver while the screw is drilling.
3. Care should be taken not to over-tighten the screw.

*Installation with impact drivers not recommended.

Disclaimer: While every reasonable effort has been made to ensure that this document is correct at the time of printing, Hobson Engineering®, its agencies and employees, disclaim any and all liability to any person in respect of anything or the consequences of anything done or omitted to be done in reliance upon the whole or any part of this document.

Bolt Tension | Anti-Vibration | Product Reliability | Traceability

hobson.com.au **QUALITY FASTENERS SINCE 1935**

