



PRODUCT DATA

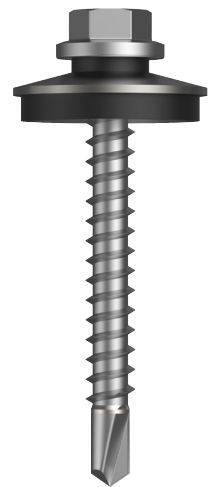
Metal SDS Cyclone — Multiseal

Description

Metal drilling point for fixing roof profiles to steel frames. Includes universal cyclonic sealing washer for use in high wind areas.

DRILLX[®]

14 Gauge Hex Head

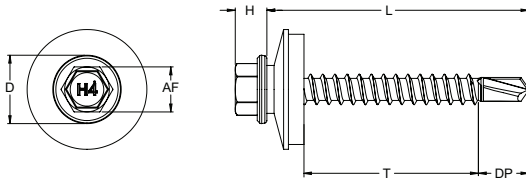


Applications	
•	Fixing roof profiles to steel frames
•	Universal sealing washer suits all roof profiles
•	Re-roofing application

Material	 C1022 Hardened
-----------------	---

Finish	 Class 4
---------------	---

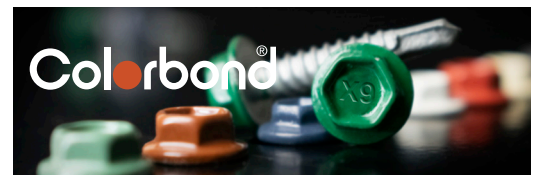
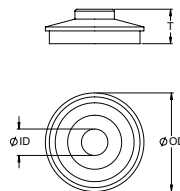
Dimensions



Part	QFind	Gauge	TPI	Length	Thread Length	Head Height	Head ϕ	Drill Point	Drive Size
				L (mm)	T (mm)	H (mm)	D (mm)	DP (mm)	AF (inch)
T9PM4YE1410053	QA35	14	10	53	33	6.0	15	10	HEX 3/8

Washer Dimensions

Outer Diameter	Inner Diameter	Thickness
OD (mm)	ID (mm)	T (mm)
25	6.3	10.6



Screw heads are available in Colorbond[®] colours.

Disclaimer: while every reasonable effort has been made to ensure that this document is correct at the time of printing, Hobson Engineering[®], its agencies and employees disclaim all liability in respect to anything or the consequences of anything done or omitted regarding the whole or any part of this document. HEC product marking is the manufacturing mark of Hobson Engineering. HEC is a registered trademark of Hobson Engineering.

Bolt Tension | Anti-Vibration | Product Reliability | Traceability

hobson.com.au **QUALITY FASTENERS SINCE 1935**





PRODUCT DATA

Metal SDS Cyclone — Multiseal

Pullout Values

Plate Material	Metal Plate Thickness	¹ Mean Load	² Characteristic Load	³ Working Load
	(mm)	(N)	(N)	(N)
G2	0.5	600	450	150
G450	1.5	3950	3600	1450
G450	2.9	6700	5700	2250

Mechanical Properties

Torsional Strength	¹ Mean Tensile Strength	¹ Mean Shear Strength	² Characteristic Tensile Strength	² Characteristic Shear Strength
(Nm)	(N)	(N)	(N)	(N)
10.9	22350	13400	19250	11550

Note: 1000N = 1kN

¹ Mean Load/Strength: the average ultimate strength of samples tested.

² Characteristic Load/Strength: 95% of these screws are expected to have a strength greater than the loads shown.

³ Working Load: the governing minimum allowable load obtained by comparing relevant concrete and steel working loads. Factors of Safety (FOS = 2.5 for steel, FOS = 2.5 for timber and FOS = 3.0 for concrete) are already included.

All values are obtained under laboratory conditions using DRILLX® products. Safety factors should be considered for design purposes. Actual pullout loads may differ depending on certain properties of the base material.

Disclaimer: while every reasonable effort has been made to ensure that this document is correct at the time of printing, Hobson Engineering®, its agencies and employees disclaim all liability in respect to anything or the consequences of anything done or omitted regarding the whole or any part of this document. HEC product marking is the manufacturing mark of Hobson Engineering. HEC is a registered trademark of Hobson Engineering.

Bolt Tension | Anti-Vibration | Product Reliability | Traceability

hobson.com.au **QUALITY FASTENERS SINCE 1935**



PRODUCT DATA

Metal SDS Cyclone — Multiseal

Installation

1. Use a cordless screw gun set at max 2,200–3,000 RPM. Fit the Hex Drive Bit over the screw and place at the fastening position.
2. Apply consistently firm pressure to the screw gun while the screw is drilling.
3. Care should be taken not to over-tighten the screw.

*Installation with impact drivers not recommended.

Recommended for use with:

MAGNETIC NUT SETTER S2 ALLOY STEEL / STANDARD DRIVE BIT 1/4		
Part	QFind	Length (mm)
TXDDPNSS37045	B030	45
TXDDPNSS37065	B055	65



Recommended
HEX 3/8 Magnetic
Nut Setter

SPRING NUT SETTER S2 ALLOY STEEL BLACK / impaX DRIVE BIT 1/4		
Part	QFind	Length (mm)
TXDIPSS37065	BA50	50
TXDIPSS37150	BA51	75



Recommended
HEX 3/8 Spring
Nut Setter

MAGNETIC NUT SETTER S2 ALLOY STEEL BLACK / impaX DRIVE BIT 1/4		
Part	QFind	Length (mm)
TXDIPNSS37045	BA22	45
TXDIPNSS37065	B095	65
TXDIPNSS37150	BA23	150



Recommended
HEX 3/8 Magnetic
Nut Setter

Disclaimer: while every reasonable effort has been made to ensure that this document is correct at the time of printing, Hobson Engineering®, its agencies and employees disclaim all liability in respect to anything or the consequences of anything done or omitted regarding the whole or any part of this document. HEC product marking is the manufacturing mark of Hobson Engineering. HEC is a registered trademark of Hobson Engineering.

Bolt Tension | Anti-Vibration | Product Reliability | Traceability

hobson.com.au **QUALITY FASTENERS SINCE 1935**

