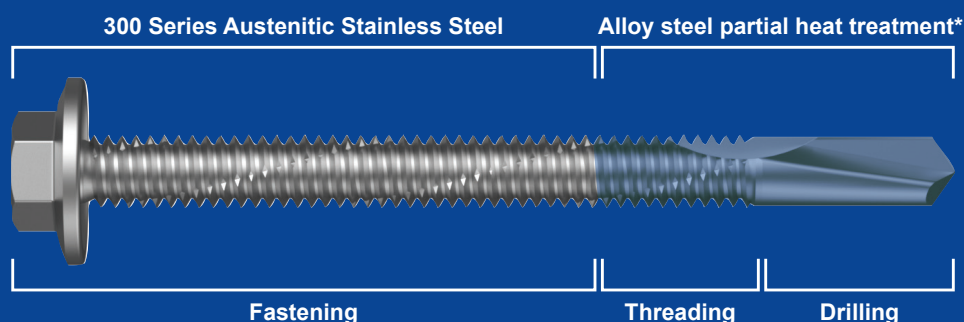


Bi-Fix™



A Bi-Metallic screw, is comprised of two metal types. The point is manufactured from high carbon steel that is heat treated to give it the ability to self-drill. The head section is manufactured from a corrosion resistant stainless steel (304 or 316). The two metals are “fused together” to form a screw that offers excellent self-drilling properties, combined with exceptional corrosion resistance.

Protective Coating

Hobson Bi-metallic screws are all coated with a metallic zinc layer and then a second baked top coat that provides an extra layer of corrosion protection and lubrication. This protective coating offers an added benefit of reducing the electrolytic corrosion potential. Our 304 range is coated with a 1000hr protection coating and our 316 range is coated with a 1500hr protection coating.

*Colour for illustrative purposes only.

Bolt Tension | Anti-Vibration | Product Reliability | Traceability

hobson.com.au **QUALITY FASTENERS** SINCE 1935



1905101D



Stainless Steel Bi-Metallic Screws

PAGE 2 of 6

Applications

304 Bi-Metallic Screws:

- › Stainless sheeting or cladding
- › Aluminium sheeting or cladding
- › General purpose with good corrosion resistance

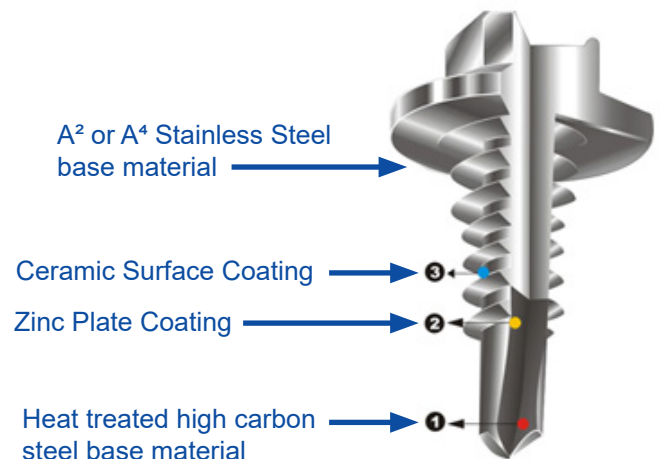
316 Bi-Metallic Screws:

- › Stainless sheeting or cladding
- › Aluminium sheeting or cladding
- › Fibreglass sheeting or cladding
- › Used where a higher corrosion resistance is required
- › Severe marine environments
- › Fertiliser facilities
- › Chemical and Petrochemical Industries

Features of Hobson Bi-Metallic Screws:

Protective Coating:

Hobson Bi-Metallic screws are coated with a metallic zinc layer and then a second baked top coat that provides an extra layer of corrosion protection and lubrication. This protective coating offers an added benefit of reducing the electrolytic corrosion potential. Our 304 range is coated with a 1000hr protection coating and our 316 range is coated with a 1500hr protection coating.



Where not to use a Bi-Metallic:

A Bi-Metallic screw should never be used on steel pre-painted roof sheeting or cladding. This results in an area of corrosion approximately 40mm in diameter on the roof sheeting around the screw head.



Bi-Fix™

Bolt Tension | Anti-Vibration | Product Reliability | Traceability

hobson.com.au **QUALITY FASTENERS SINCE 1935**



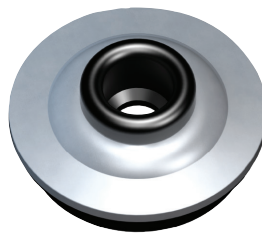
Stainless Steel Bi-Metallic Screws

PAGE 3 of 6

Chemical Composition:

Steel	C max	Si max	Mn max	P max	S max	Ni	Cr	Mo	Cu
SUS 304	0.08	1.00	2.00	0.045	0.030	8.00-10.00	18.00-20.00	-	-
SUS 316	0.03	1.00	2.00	0.045	0.030	10.00-14.00	16.00-18.00	2.00-3.00	3.00-4.00

Note: According to DIN ISO 3506, stainless steel chemical composition requirement of Cu contain can accept 4% and below.



Bi-Metallic Roofing Screws:

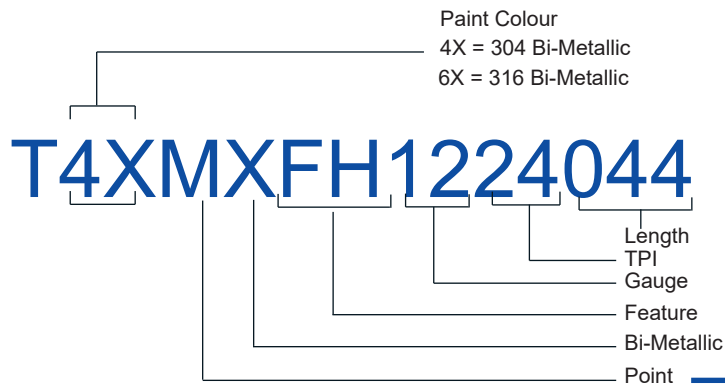
Our range includes Bi-Metallic screws with an EPDM bonded 19mm OD Aluminium washer.

Hobson Part Number System:

Hobson Bi-Metallic screw part numbers follow our standard logical part number system.

T4X : 304 Bi-Metallic part number prefix

T6X : 316 Bi-Metallic part number prefix



POINT TYPE

Code	Description
5	Series 500
G	Metal with Wings
H	S500 with Wings
M	Metal Point

Hobson Specials:

In addition to our stocking range, we are able to source and supply any Bi-Metallic screw to customers requirements.



Bolt Tension | Anti-Vibration | Product Reliability | Traceability

hobson.com.au **QUALITY FASTENERS** SINCE 1935