



PRODUCT DATA

ERM Dual Slot Self-Lock Nut with Free-Spinning Washer



J. LANFRANCO

LOCKNUTS FOR CRITICAL BOLTED JOINTS

ISO 2320

Applications

- Mining and processing
- Railway and transportation
- Energy
- Military
- Industrial

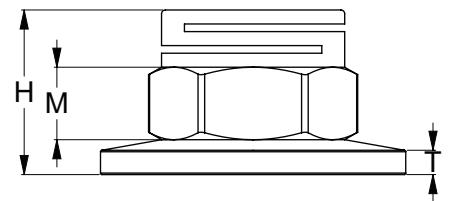
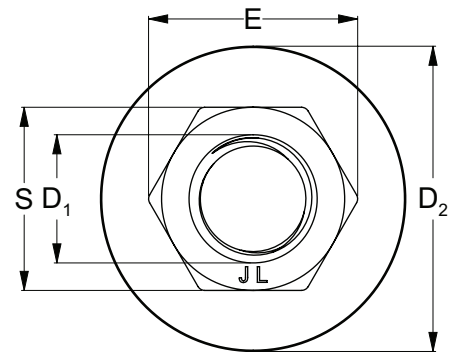
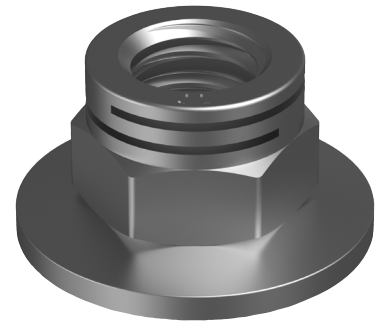
Features

- Extremely reliable
- Consistent prevailing torque
- Locking slots are independent of bolt tension
- All metal is reusable
- Dual-slotted self-locking hexagon
- Captive free-spinning disc spring maintains tension in joint under dynamic loads

Material



Finish



Part	D ₁	D ₂	T	H	M	S	E
	(mm)	(mm)	(mm)	(mm)	(mm)	(mm)	(mm)
NJ08TERMM08	M8	22	1.25	11.8	4.9	13	14.38
NJ08TERMM10	M10	27	1.50	14.8	6.3	16	17.77
NJ08TERMM12	M12	27	1.75	16.5	7.4	18	20.03
NJ08TERMM16	M16	40	2.00	22.1	9.7	24	26.75

Temperature Range

-50°C to 300°C

Disclaimer: while every reasonable effort has been made to ensure that this document is correct at the time of printing, Hobson Engineering®, its agencies and employees disclaim all liability in respect to anything or the consequences of anything done or omitted regarding the whole or any part of this document. HEC product marking is the manufacturing mark of Hobson Engineering. HEC is a registered trademark of Hobson Engineering.

Bolt Tension | Anti-Vibration | Product Reliability | Traceability

hobson.com.au **QUALITY FASTENERS SINCE 1935**

