



PRODUCT DATA

Grade 100 Eye Safety Hook

Eye safety hook locks when a load is applied to prevent the release of chains and lifting slings.

Applications	
•	Use with Grade 100 lifting components
•	Lifting with chains and synthetic slings

Material	Grade 100
-----------------	-----------

Finish	Powder Coat
---------------	-------------



Features

- Conforms to AS 3776
- 100% magnaflux crack detection
- Safety hook prevents components from releasing if line becomes slack
- Back lever releases hook

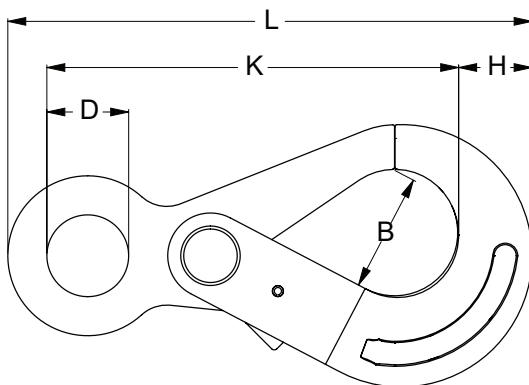


Part	QFind	Size	WLL	BL	Dimensions				
					B (mm)	D (mm)	K (mm)	H (mm)	L (mm)
ULHK10PSE-06	H10SE6	6	1.4	5.6	27.0	21.0	110.0	20.0	141.0
ULHK10PSE-08	H10SE8	8	2.5	10.0	35.0	27.0	137.0	26.0	175.0
ULHK10PSE-10	H10SE10	10	4.0	16.0	43.0	34.5	170.0	27.0	212.0
ULHK10PSE-13	H10SE13	13	6.7	26.8	51.5	40.0	209.0	40.0	269.0
ULHK10PSE-16	H10SE16	16	10.0	40.0	59.0	50.0	256.0	50.0	333.0
ULHK10PSE-20	H10SE20	20	16.0	64.0	74.5	60.0	277.0	61.5	368.5



MARKINGS:

- **CE** (European Conformity)
- **WLL** (Working Load Limit)
- **Trace Code** (linked to certificate online)
- **Manufacturer's mark**



Disclaimer: while every reasonable effort has been made to ensure that this document is correct at the time of printing, Hobson Engineering®, its agencies and employees disclaim all liability in respect to anything or the consequences of anything done or omitted regarding the whole or any part of this document.

Bolt Tension | Anti-Vibration | Product Reliability | Traceability

hobson.com.au **QUALITY FASTENERS SINCE 1935**

