



PRODUCT DATA

Grade 80 Eye Grab Hook

Eye grab hook with support lug enables easy connection to lifting slings and provides back hooking for adjustable chain slings.

Applications

- Use with Grade 80 lifting components
- Lifting with chains and synthetic slings

Material



Finish

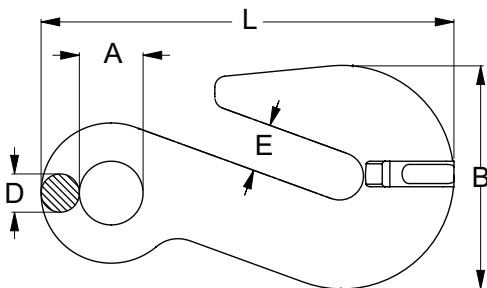


Features

- Conforms to AS 3776
- 100% magnaflux crack detection
- Ability to shorten lengths of chain
- Can be used for back hooking



| Part | QFind | Size | WLL | BL | Dimensions | | | | |
|--------------|-------|------|---------|---------|------------|-----------|-----------|-----------|-----------|
| | | (mm) | (tonne) | (tonne) | A (mm) | E (mm) | D (mm) | B (mm) | L (mm) |
| ULHK08PGE-06 | HGE6 | 6 | 1.12 | 4.48 | 13.0 | 8 | 8.0 | 45.0 | 76.5 |
| ULHK08PGE-08 | HGE8 | 8 | 2.00 | 8.00 | 16.0 | 11 | 9.5 | 63.0 | 106.0 |
| ULHK08PGE-10 | HGE10 | 10 | 3.15 | 12.60 | 20.0 | 13 | 12.0 | 79.0 | 126.0 |
| ULHK08PGE-13 | HGE13 | 13 | 5.30 | 21.20 | 25.0 | 16 | 15.0 | 100.0 | 156.0 |
| ULHK08PGE-16 | HGE16 | 16 | 8.00 | 32.00 | 28.5 | 20 | 19.0 | 122.0 | 193.0 |
| ULHK08PGE-20 | HGE20 | 20 | 12.50 | 50.00 | 36.0 | 25 | 20.0 | 150.5 | 226.0 |
| ULHK08PGE-22 | HGE22 | 22 | 15.00 | 60.00 | 42.0 | 26 | 27.0 | 169.0 | 269.0 |



MARKINGS:

- **CE** (European Conformity)
- **WLL** (Working Load Limit)
- **Trace Code** (linked to certificate online)
- **Manufacturer's mark**



You can download this Test Certificate and/or Report from our website:

hobson.com.au

Disclaimer: while every reasonable effort has been made to ensure that this document is correct at the time of printing, Hobson Engineering®, its agencies and employees disclaim all liability in respect to anything or the consequences of anything done or omitted regarding the whole or any part of this document.

Bolt Tension | Anti-Vibration | Product Reliability | Traceability

hobson.com.au QUALITY FASTENERS SINCE 1935